

America's New Leader in

3 cubic yard Power Sweepers...

**THE
ELGIN
WHITE
WING^{III}**



ELGIN

ELGIN
White Wing

ELGIN

THE STORY BEHIND THE **Elgin White Wing**

Every city, county, state, federal, foreign, or private purchaser of an ELGIN WHITE WING is assured of one thing: Back of this sweeper is the finest team of engineering, research, and manufacturing personnel ever assembled. Traditional ELGIN product integrity is a guaranteed by-product of this machine.

Starting over 46 years ago with the first street sweeper, Elgin Sweeper Company has established a record of product "firsts" probably unequalled in any industry. Persons acquainted with street sweeping will readily recall some of them: First with three-wheel design . . . first conveyor system . . . first dust control system . . . first with side broom . . . first to use independent drive . . . first to use hydraulics, and many others.

Today, adding to its long list of engineering Firsts and various models of power sweepers, there are two new mechanically and hydraulically engineered ELGIN WHITE WINGS: The WHITE WING III (3 cubic yard capacity) and the WHITE WING IV (four-yard capacity).

The potential buyer of a WHITE WING will find in it a combination of three desirable performance factors: (1) minimum first-cost, (2) excellent sweeping ability, and (3) economical operation, service and maintenance.



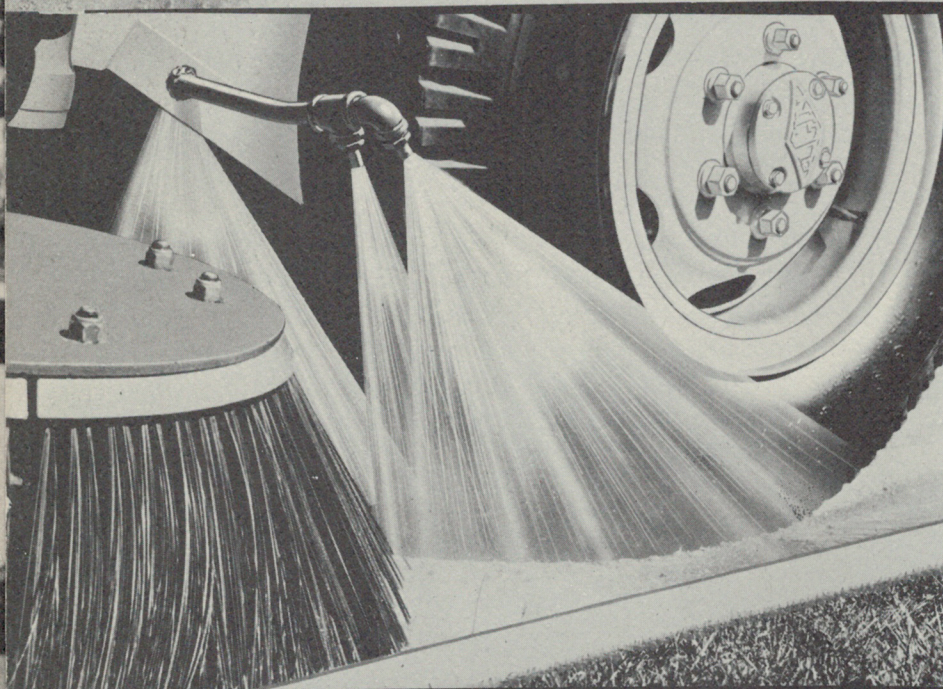


The Engineering Power ELGIN WHITE WING

Most Efficient Side Broom Assembly

Behind and protected by front wheel . . . directly under operator's vision point, and completely controlled from operator cockpit, the WHITE WING side broom will withstand jolts and abuse from SIX directions: front and back, up or down; inward or outward.

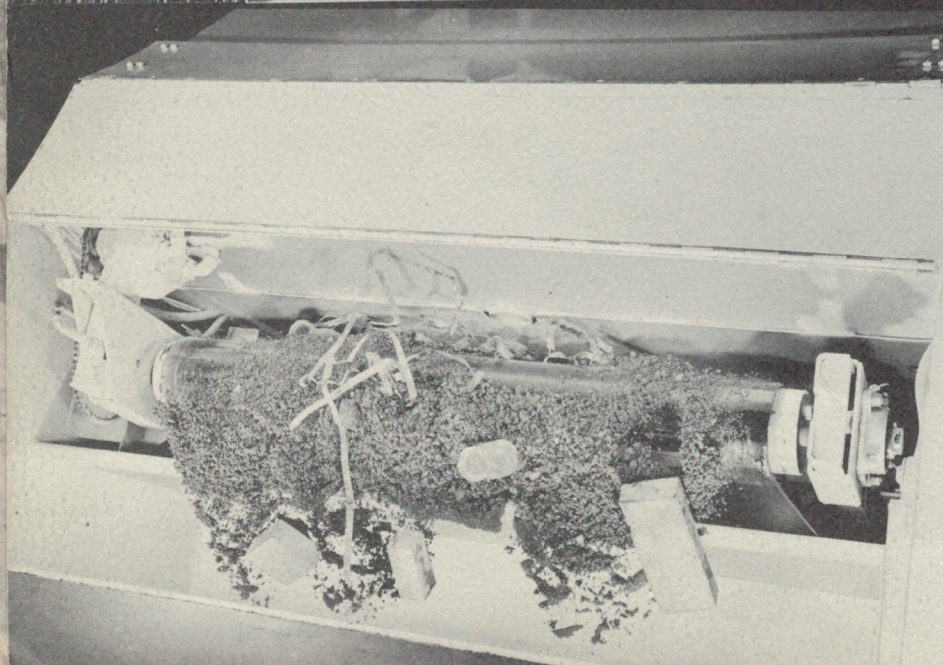
Sweeper operators know the extreme importance of a properly operating side broom. The ELGIN patented side broom assembly cannot be matched anywhere.



Unequaled Efficiency, Elgin Water Spray System

An exclusive of any ELGIN sweeper is its high-pressure water spray system. Scientifically developed through the years by both field and research laboratory experience, *positively* controls dust at its source.

Features of the system include gear-type pump, atomizing-mist spray nozzles, an abundant water supply, and strainer to protect pump and nozzles.



Exclusive Conveyor System . . . Capable of Handling All Types of Street Debris

The WHITE WING conveyor system is hydraulically driven and virtually jam-free. Taking street debris . . . of all kinds . . . which has been swept in from side broom, to main broom and up conveyor belt, the ELGIN conveyor system will operate efficiently hour after hour, day after day with minimum down-time.

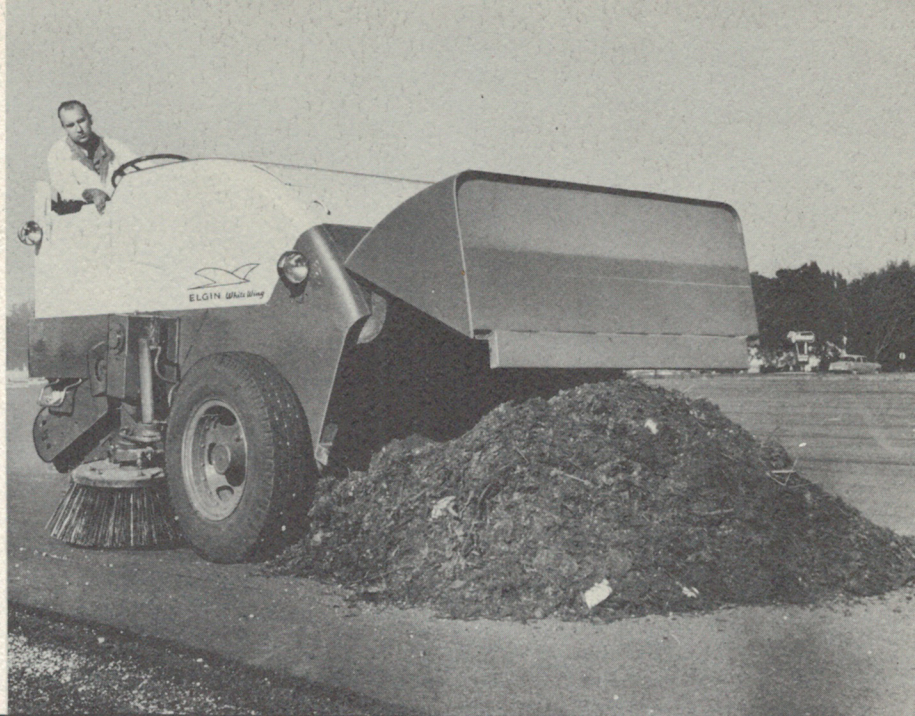
An efficient conveyor system is a Must to meet the demands of today's "multiple-demand" sweeping. The WHITE WING'S conveyor system is an outstanding example of this.

Principles that Make the Today's Best Sweeper Buy

Trouble-Free, Full-Size Hopper

Hoppers on the WHITE WING III and the WHITE WING IV are full-size hoppers. Hopper doors are actuated by two hydraulic cylinders (not just one), can be hydraulically locked and have double-hinged inspection doors.

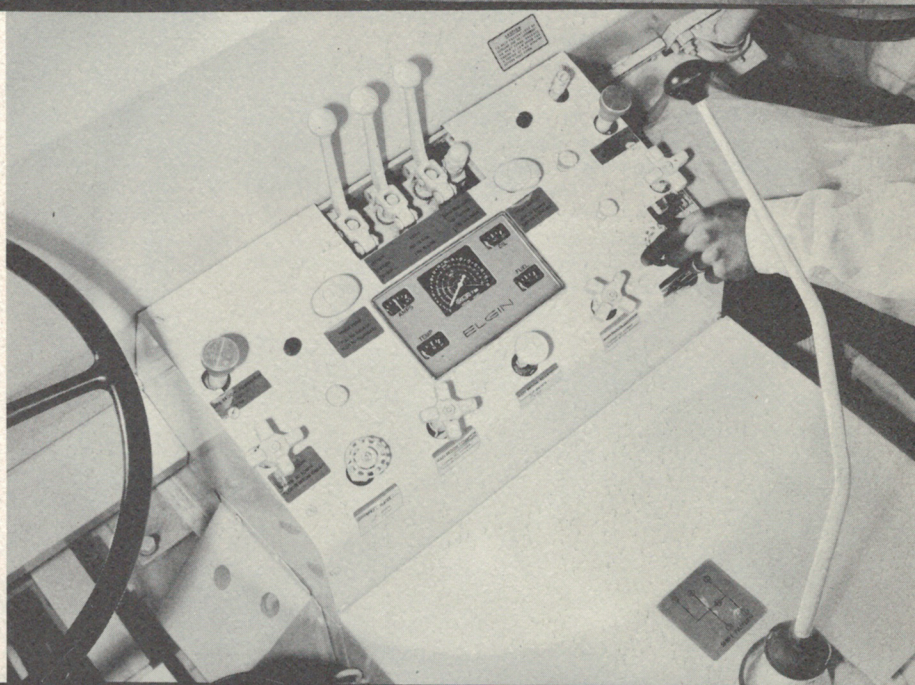
With unobstructed front-end opening, WHITE WINGS discharge loads in neat, compact piles.



Operator's Compartment Built for Efficiency and Comfort

All controls operator must use for sweeping are at his fingertips, including pressure and wear adjustments on all brooms. There is no need for operator to dismount, make wear adjustments and remount compartment. This means no traffic hazards created from parked machine nor unnecessary lost time for making adjustments.

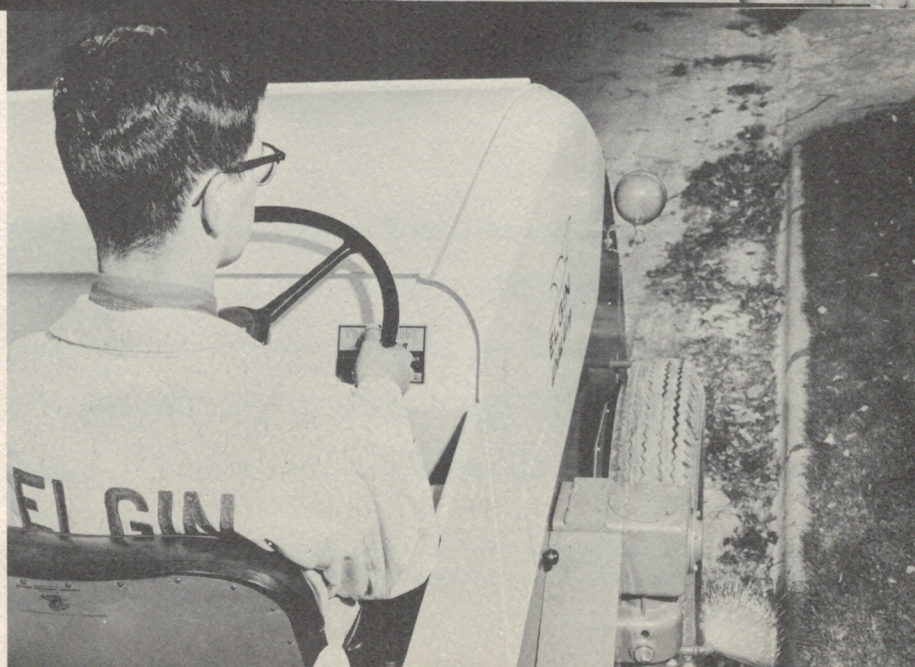
The WHITE WING compartment is modern-designed for up-to-date sweeping requirements.



Safe, Unrestricted Visibility for Operator

ELGIN'S streamlined, compact-design provides more safety and visibility than any other sweeper offered on today's market. With visibility go efficient sweeping and included is the ease with which the operator views the road ahead as well as his side broom.

The WHITE WING operator sits directly over his side broom and his vision ahead is unobstructed. These factors provide faster, safer and easier sweeping.





Maneuverability

Closely related to visibility is maneuverability, and the WHITE WING is truly maneuverable sweeper. On the straightaway, turning corners, in or around parked cars, the three-wheel designed WHITE WING handles exceptionally well. Soon after taking the wheel, the new operator will adjust himself to the superior handling qualities of the WHITE WING.



Versatility

Primarily used on the nation's streets and highways, the WHITE WING is ideally suited for any situation requiring power sweeping. The returns . . . in dollars . . . from machine sweeping of supermarkets, warehouses, houses, airports, toll roads, can soon result in more than the initial cost of the sweeper. An 8-foot wide swath on the WHITE WING, Single, and a full 10-foot wide sweeping path of the WHITE WING, Dual, means a tremendous sweeping capability.

The above mentioned features are only a few of the exemplary features of the ELGIN WHITE WING III and the WHITE WING IV, but they are vital ones. Regardless of your needs . . . before purchasing any sweeper . . . CONSIDER ALL THE FACTORS THAT DECIDE EFFICIENCY IN POWER SWEEPING. The difference can often be figured in hundreds of dollars.

S
P
E
C
I
F
I
C
A
T
I
O
N
S

ENGINE: *	Make.....International model BD 240, 6-cylinder Piston displacement240.3 cu. in. Bore3-9/16 in. Stroke4.018 in. Compression ratio7.5 to 1 Maximum brake horsepower.....140.8 Brake horsepower—at governed speed.....110 Taxable horsepower30.4 A.M.A. (N.A.C.C.)
<i>*Elgin Exclusive—Diesel Engines available on all Sweepers</i>	
TRANSMISSION:	Heavy-Duty Truck type— 4 forward speeds (4th direct), 1 reverse.
FINAL DRIVE:	Heavy-Duty Truck type differential axle with heavy-duty roller chains, fully enclosed, from axle to both drive wheels. Total gear reduction in direct drive (4th speed) 18.6.
ELECTRICAL SYSTEM:	12 volt system with voltage and current regulator, 30 ampere generator, starter, 70 ampere battery.
WHEELS AND TIRES:	Wheels.....Steel disc type—three Tires.....Front, 9.00 x 20, 12-ply. Rear, 8.25 x 20, 10-ply
BRAKES:	Service Brakes—Heavy duty, fully enclosed, 2-shoe double cylinder internal expanding type, operating in both drive wheels. Hydraulically actuated by foot pedal. Protected by double dust shield. Parking Brake—External contracting type on main transmission drive shaft. Hand lever operated.
AUXILIARY DRIVES:	Main broom, side broom, and water pump driven by power take-off from main transmission. Conveyor driven by hydraulic pump and motor. All operating controls for side broom, main broom, conveyor, dirt hopper, and spray system, located adjacent to driver seat.
MAIN (Pick-up) BROOM:	Type.....Hydraulic suspension and snubbing. Size.....36 in. diameter and 68 in. long, refillable and reversible. Core.....12 in. diameter, steel, filled with 26 in. standard fibres. SpeedsVariable.
SIDE BROOM:	Type.....Vertical digger design, hydraulically suspended, with rearward and sideward angular adjustment. Size.....36 in. diameter, fitted with four quickly detachable segments filled with 26 in. oil tempered steel brush wire. SpeedsVariable.
CONVEYOR SYSTEM:	Belt.....Multiple-ply reinforced rubber conveyor belt with integrally molded cleats—2 in. high. Drive.....Reversible hydraulic motor incorporating relief valve.
DIRT HOPPER:	Capacity.....3 cu. yds. (81 cu. ft.) Type.....Quick opening front discharge door hydraulically operated by two double-acting hydraulic cylinders.
WATER SPRAY SYSTEM:	Capacity200 gallons Spray nozzles.....Located adjacent to side broom and main broom Fine mesh strainer.....Protects pump and nozzles Pump.....High pressure gear type Operating controls.....Pump drive and valve controls located in driver's compartment.
DIMENSIONS:	Wheel base129 in. Overall length190 in. Height.....81 in. (without cab) Max. rigid width.....102 in. Turning radius.....15 feet (sweeping) Weight (net)10,600 lbs. Sweeping path—one side broom.....8 ft. Sweeping path—two brooms.....10 ft.
STANDARD EQUIPMENT:	Adjustable foam rubber seat with torsion control stabilizer bars. One water-tank filling hose with coupling. Painted: White.

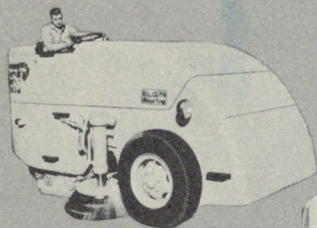
Note: Elgin Sweeper Company, Elgin, Illinois, manufacturer of the Elgin White Wing, reserves the right to make changes in the above specifications which in its opinion improve the operation of the sweeper and benefit the purchaser.

ALASKA

HAWAII

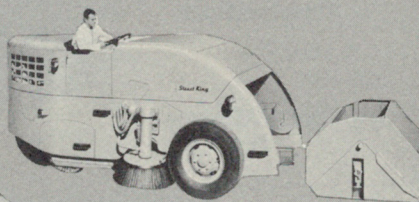
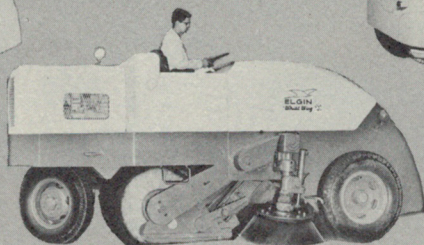
ELGIN... Sweepers for the Nation

Power Sweepers for Streets, Highways, Shopping Centers,
Airports, Warehouses, Parking Lots and Docks 



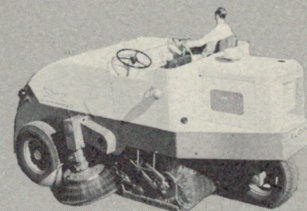
ELGIN STREET KING

ELGIN WHITE WING IV



ELGIN STREET KING D

ELGIN WHITE WING III



elgin

T H E CORPORATION



SANITATION HEADQUARTERS • 222 WEST ADAMS STREET • CHICAGO 6, ILLINOIS

Elgin White Wing Sweepers are manufactured by Elgin Sweeper Company, Elgin, Illinois