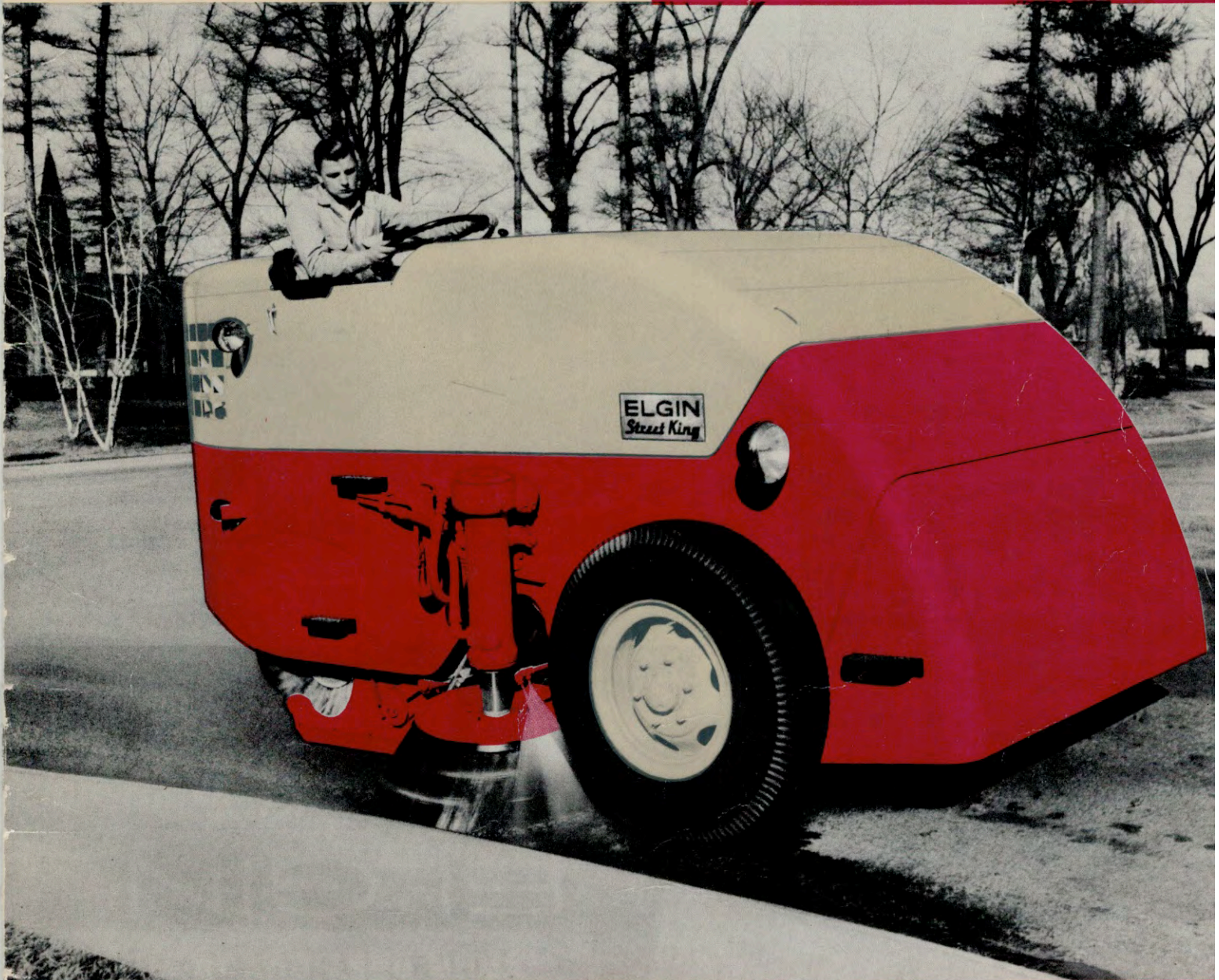


THE NATIONS' MOST
IMAGINATIVELY DESIGNED
STREET SWEEPER

the
ELGIN
Street King[®]



**BUILT TO GIVE YOU ALL THE
ADVANTAGES OF**

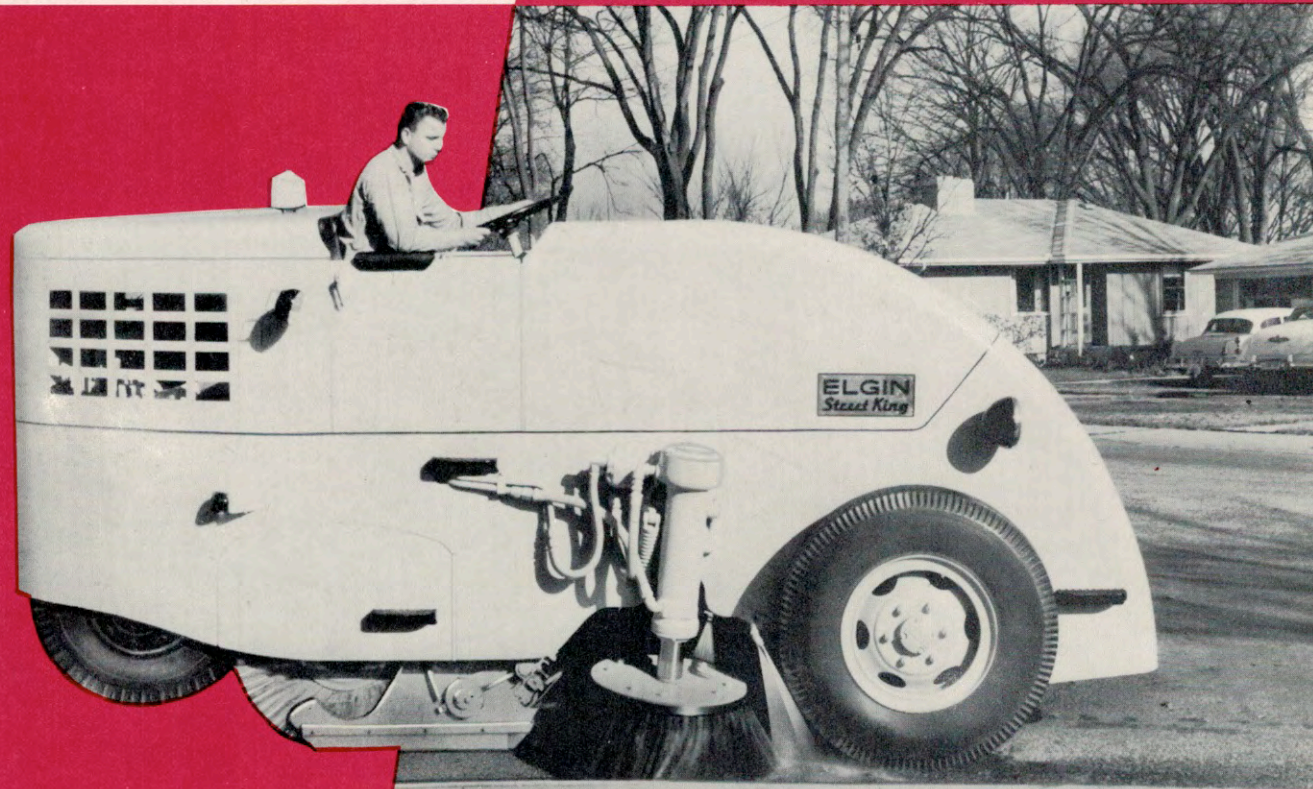
HYDRAULIC POWER

FOR A SMOOTHER
 RUNNING
 STREET CLEANING
 OPERATION

...YOUR BEST BUY IS THE

ELGIN

Street King



The ELGIN STREET KING not only gives you the cleanest possible streets — but you do the job at the lowest possible cost per curb mile. ELGIN'S outstanding engineering and design is the reason behind the sweeper's all-around fine performance. It is not possible anywhere today to find a more ruggedly constructed sweeper — a sweeper that will give you more years of productive service. No other sweeper makes such extensive use of hydraulics, is smoother running or requires so little maintenance. Add to this the ELGIN STREET KING'S attractive modern lines, and you have a sweeper that's just right for your community.

**IMAGINATIVE
 ENGINEERING**

ELGIN

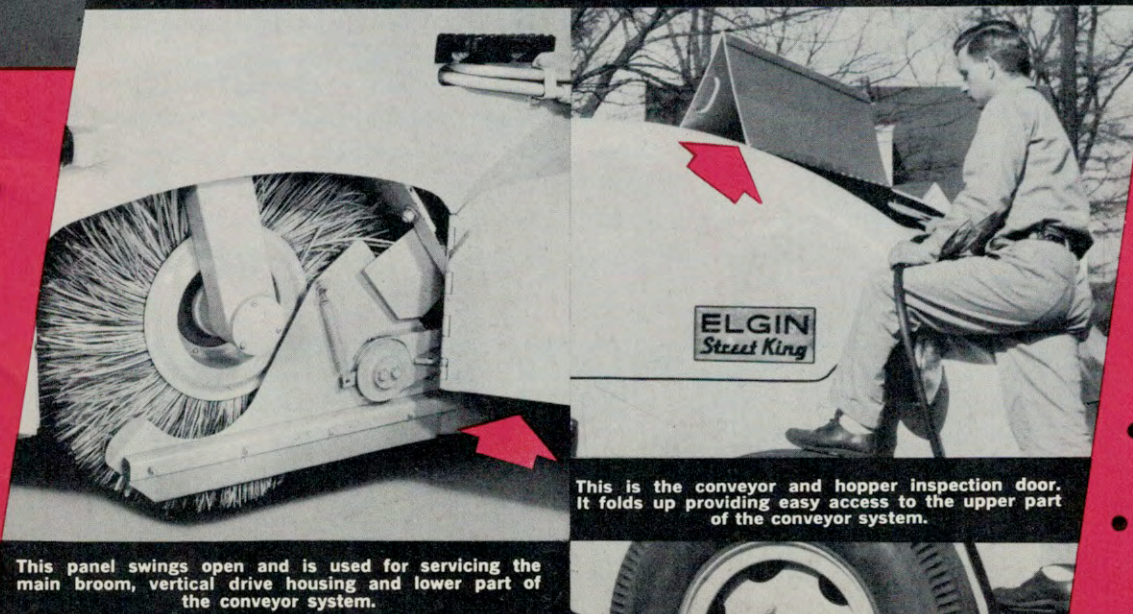
PROTECTS PARTS FROM CLIMATE-CAUSED WEAR

Nowhere will you find a finer engineered sweeper than the ELGIN STREET KING. Care has been taken to protect parts from the abrasive and corrosive effects of dirt and weather. The two main drive chains are protected in dirt-proof compartments. All gears and bearings, plus the only other chain are sealed in oil tight housings.

OPERATING PARTS ARE EASY TO REACH



Special panels provide access to the main drive chains and chain tighteners.



This is the conveyor and hopper inspection door. It folds up providing easy access to the upper part of the conveyor system.

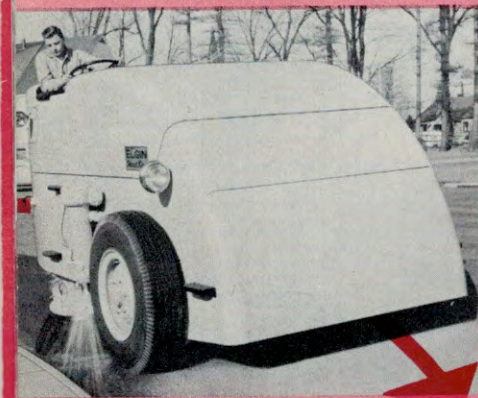
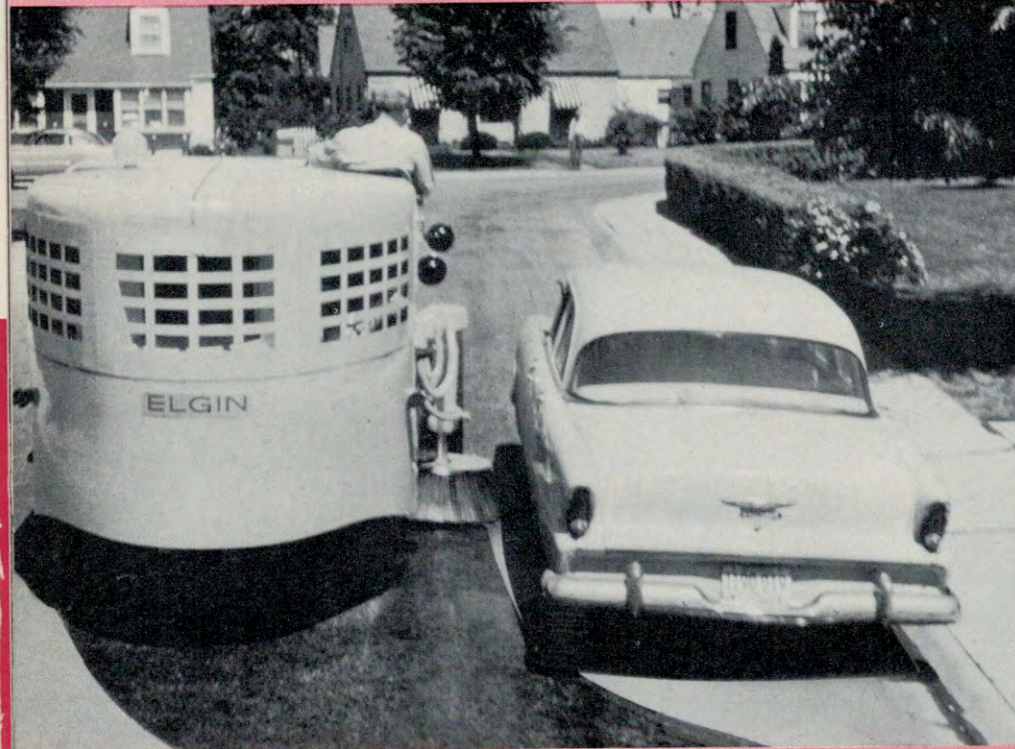
This panel swings open and is used for servicing the main broom, vertical drive housing and lower part of the conveyor system.

**HOW
 YOU BENEFIT
 FROM THIS
 ELGIN
 Street King
 FEATURE**

- Parts last longer and your maintenance costs are lower than with any other sweeper.
- Readily accessible parts make the job easier for your maintenance men.
- Streamlined design gives you a clean modern street sweeper that is an asset to the appearance of your community.

OUTSTANDING MANEUVERABILITY...

CUTS DOWN UNSWEPT AREA AROUND PARKED CARS



Sharp corners are taken in stride.

The STREET KING provides the most compact design of any large capacity sweeper. The side broom, conveyor and spray system are all within its 129" wheel base. There's no overhang, no counterweighting. The sweeper is balanced for safety.

THE OPERATOR CAN VIEW HIS WORK WITHOUT STRAINING.

Because of the location of the side broom, there are no wheels or appurtenances to block the operator's view. The curved, sloping front of the sweeper body eliminates blind areas and gives the operator unobstructed forward visibility.

NO OTHER SWEEPER IS SO COMPACTLY DESIGNED

FULL VISION...



EASY MANEUVERABILITY PERMITS CLOSE CLEARANCE AROUND PARKED CARS.

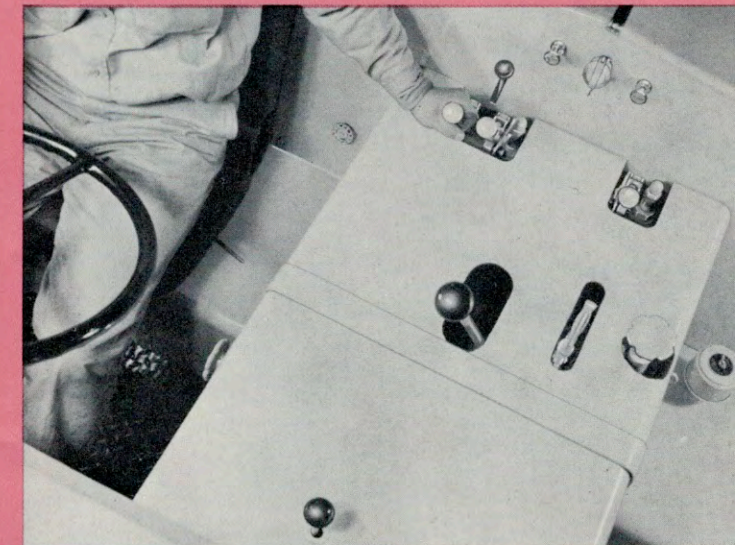
The ELGIN STREET KING'S outstanding maneuverability is a big advantage, particularly in cities where parking regulations for street sweeping are not in effect. The sweeper is easy to steer and features an airplane strut type guide wheel assembly that permits sharp turns and close clearance around cars. The sweeper will take 90 degree corners in stride and has a 30 foot turning circle.

CLEAN, UNCLUTTERED COCKPIT IS BUILT FOR

DRIVER COMFORT

... ALL CONTROLS ARE WITHIN QUICK, EASY REACH OF THE OPERATOR

All controls for driving the ELGIN STREET KING and operating the auxiliaries are at the operator's fingertips. The comfortable, cushioned seat insures tireless driving for the operator. The steering gear is ball bearing mounted with a large 20-inch diameter wheel that makes steering easy.



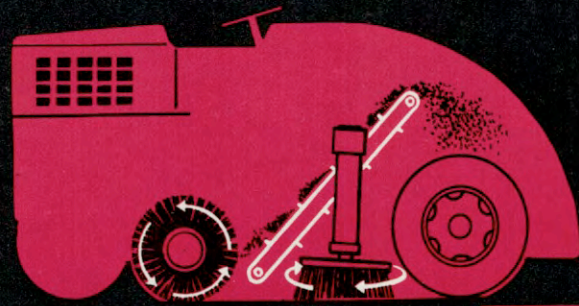
HANDY LOCATION OF CONTROLS MEANS EASE OF OPERATION—CUTS DOWN ON DRIVER FATIGUE

...HOW YOU BENEFIT FROM THIS ELGIN Street King FEATURE

- Airplane, strut type, guide wheel assembly permits sharp turns and close clearance around cars and simplifies changing of rear tire.
- Compact design means better balance for maneuverability and safety.
- Your operator has full visibility.

- Handy location of controls saves time and effort for your operators.
- Ease of operation means your drivers become less tired or fatigued during their work shift.
- All auxiliaries are controlled from the cockpit—which means your operator does not have to leave the driver's compartment for hand adjustments.

...HOW YOU BENEFIT FROM THIS ELGIN Street King FEATURE



Main Broom, Side Broom and Conveyor System Operate Effectively from "0" M.P.H. up to Maximum Sweeping Speeds—Even When Gears are Shifted.

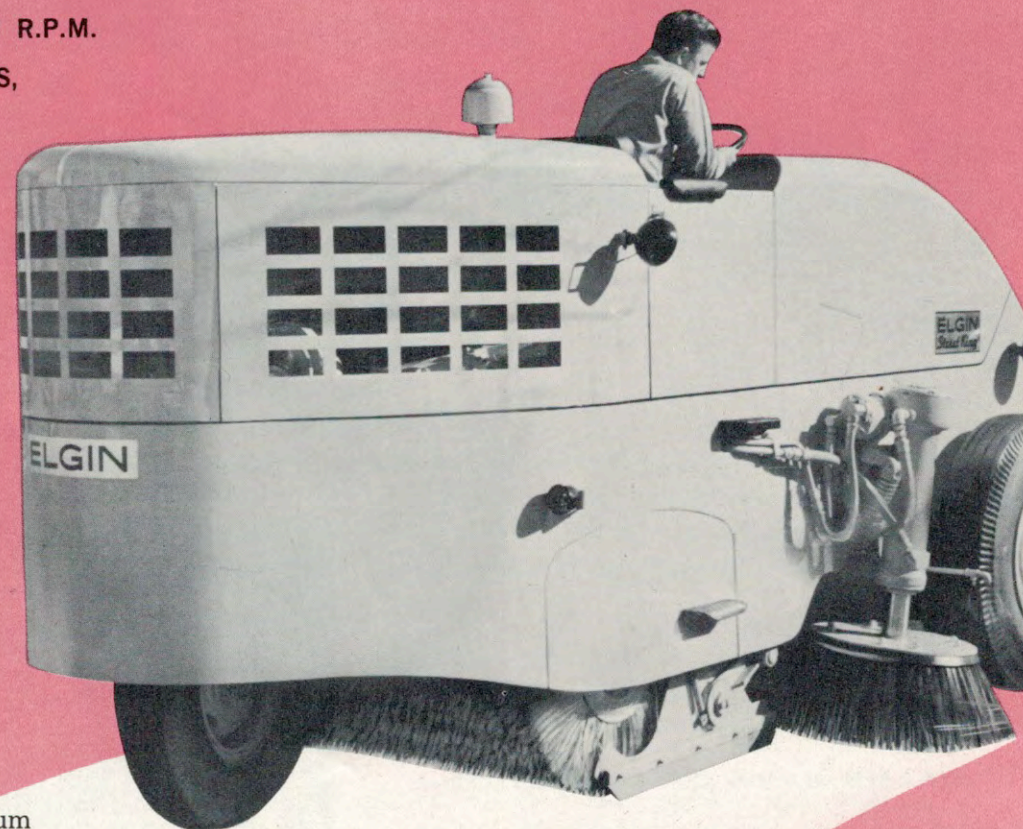
ONLY THE **ELGIN**
Street King

GIVES YOU A

COMPLETELY INDEPENDENT DRIVE

WITH ELGIN'S HIGH BROOM R.P.M.
AT SLOW SWEEPING SPEEDS,
YOU TAKE HEAVY
ACCUMULATIONS
IN STRIDE

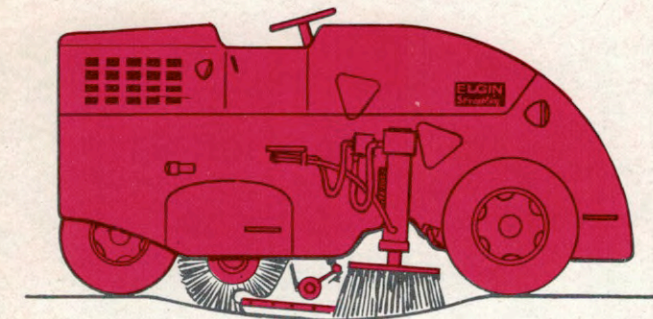
The ELGIN STREET KING is the only sweeper with a *completely* independent drive. Because the auxiliaries are driven off the front of the crankshaft, the main broom, side broom and conveyor do their job whether the sweeper is stopped, inching-along or traveling at maximum sweeping speeds. There's no loss of sweeping efficiency when gears are shifted or when the clutch is worked "in or out."



The STREET KING'S brooms operate efficiently—even during inch-along operations.

...HOW
YOU BENEFIT
FROM THIS
ELGIN
Street King
FEATURE

- All auxiliaries can be operated whether the machine is moving, stopped or gears are being shifted.
- Your operators can slow down the traveling speed of the STREET KING without affecting its sweeping efficiency.
- Heavy accumulations of dirt and litter are easy because the STREET KING sweeps effectively even when the machine has been slowed down for inch-along operations.
- You save time and increase productivity, because the STREET KING gets all the dirt



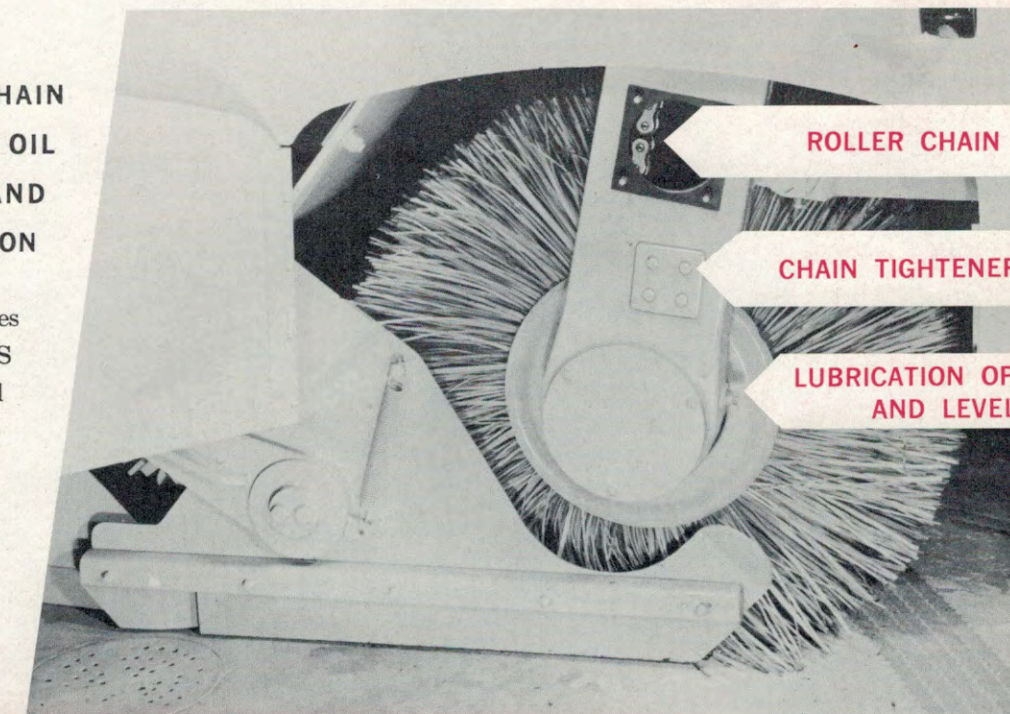
EXCLUSIVE, HYDRAULICALLY FLOATED MAIN BROOM

MAIN BROOM AND SIDE BROOM FOLLOW CONTOUR OF PAVEMENT

The ELGIN STREET KING is the only sweeper that gives you the advantage of hydraulically floated brooms. Since the weight of the main broom tends to force it down against the pavement, hydraulic pressure, controlled from the driver's compartment, actually lifts the broom so that it bears against the pavement at just the right pressure. When rises or depressions are encountered, the brooms adjust automatically to the contour of the pavement being swept, maintaining an even, constant pressure at all times. When sweeping conditions require pressure changes—a flick of the wrist does it.

MAIN BROOM DRIVE CHAIN RUNS IN BATH OF OIL ... MEANS LONGER WEAR AND A QUIETER SWEEPING OPERATION

The sturdy roller chain that drives the ELGIN STREET KING'S main broom is sealed from dirt and weather inside the leftside, tubular vertical housing. It runs in a bath of oil and gives you the advantage of long, trouble-free wear and a quieter street cleaning operation.



ROLLER CHAIN

CHAIN TIGHTENER

LUBRICATION OIL
AND LEVEL

- Even, hydraulic broom pressure means you do a better street cleaning job and save on broom wear.
- Broom pressure is controlled from the cockpit and the operator does not have to interrupt his sweeping to make broom adjustments.
- Chain adjustment is easy.
- The vertical housing and drive chain do not have to be removed for broom changes.
- Maintenance and wear are held to the very minimum.

...HOW
YOU BENEFIT
FROM THIS
ELGIN
Street King
FEATURE

HYDRAULICALLY FLOATED AND DRIVEN SIDE BROOM...

FLEXIBLE IN **2**
DIRECTIONS

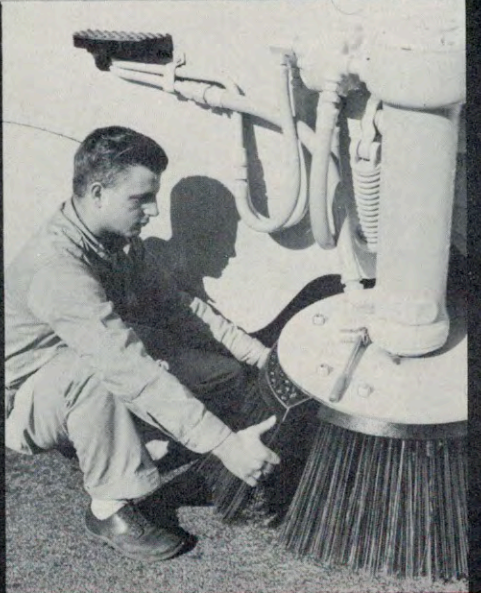
Only the ELGIN STREET KING gives you a side broom that is both hydraulically driven and floated. This large rotary broom removes sweepings from the gutter and throws them into the path of the main broom. It is the only gutter broom that is flexible in two directions—both rearward and inward. This is an important feature for you, because it prevents damage in the event the broom head strikes an obstruction.



BROOM PRESSURE IS ADJUSTED FROM THE COCKPIT

Like the ELGIN STREET KING'S main broom, the side broom is hydraulically floated and adjusts automatically to the contour of the pavement being swept. The pressure of the broom on the pavement is controlled from the cockpit by simply adjusting the float valves.

An overhead close-up of the STREET KING'S cockpit



QUICK CHANGE BROOM SEGMENTS

The ELGIN STREET KING features broom segments that are loose and the segments slide on and off as easily as that! The broom is 36 inches in diameter, and the tough, 26-inch steel brush wire.

Close-up of the broom head showing the removal of the KING'S quick change segments

KNEE ACTION MAIN BROOM SUPPORT

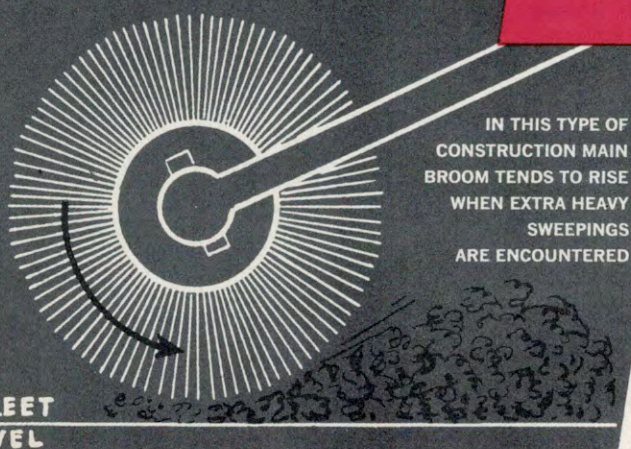
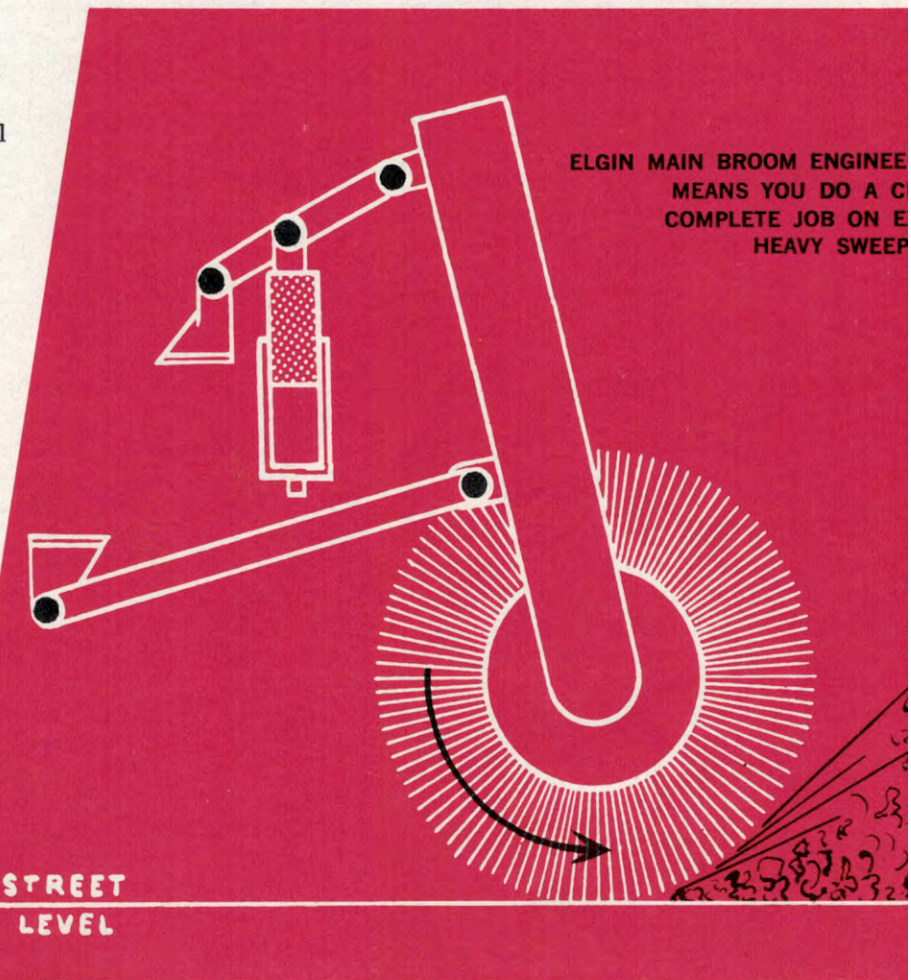
PREVENTS MAIN BROOM FROM RISING OVER HEAVY SWEEPINGS

THE ELGIN STREET KING EMPLOYS THE "PUSH" METHOD OF SWEEPING

In the diagram you will notice that the control arms and vertical housings that support the STREET KING'S main broom are mounted on pivots. This, combined with the fact that the broom is hydraulically floated, gives the structure flexibility, or a Knee Action quality. It is this flexibility that prevents the broom from rising up over sweepings when extra heavy accumulations are encountered.

NO BROOM BOUNCE

The ELGIN STREET KING is the first sweeper ever developed in which the driving forces have no effect on the pressure of the main broom on the street. This prevents broom bounce and uneven broom wear.



COMPETITIVE SWEEPERS EMPLOY "TRAILER" OR "PULL" METHOD OF SWEEPING

ELGIN engineers hold to the principle that the best way to sweep is to "push" the broom into the sweepings. Most people who have ever handled a push broom recognize the superiority of this method. For example, if a man is pushing a broom into a pile of sand, he will sweep all the sand in front of him. On the other hand, if he is pulling the broom into the pile, the broom will have a tendency to rise up over the pile leaving a quantity of sand behind.

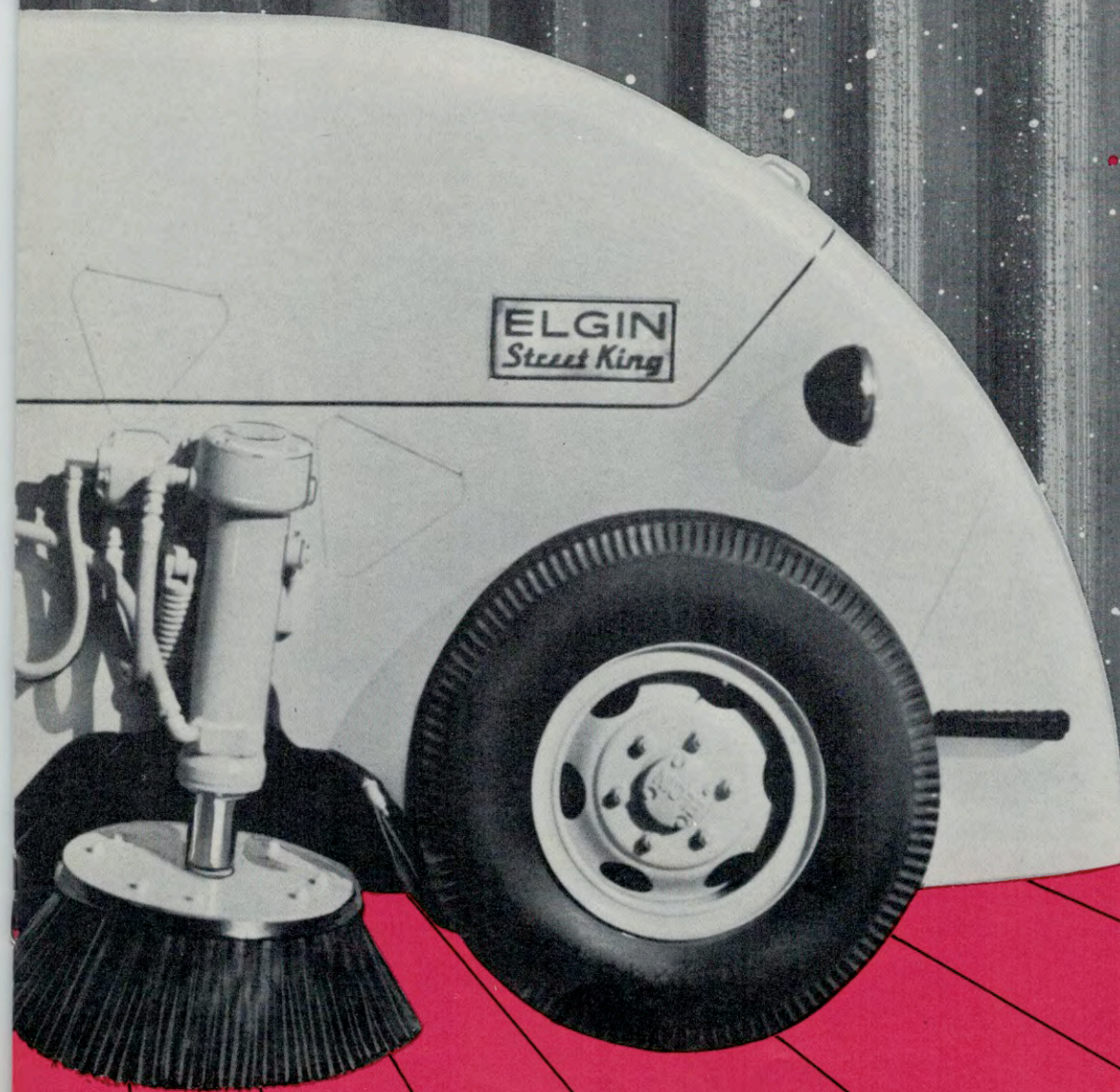
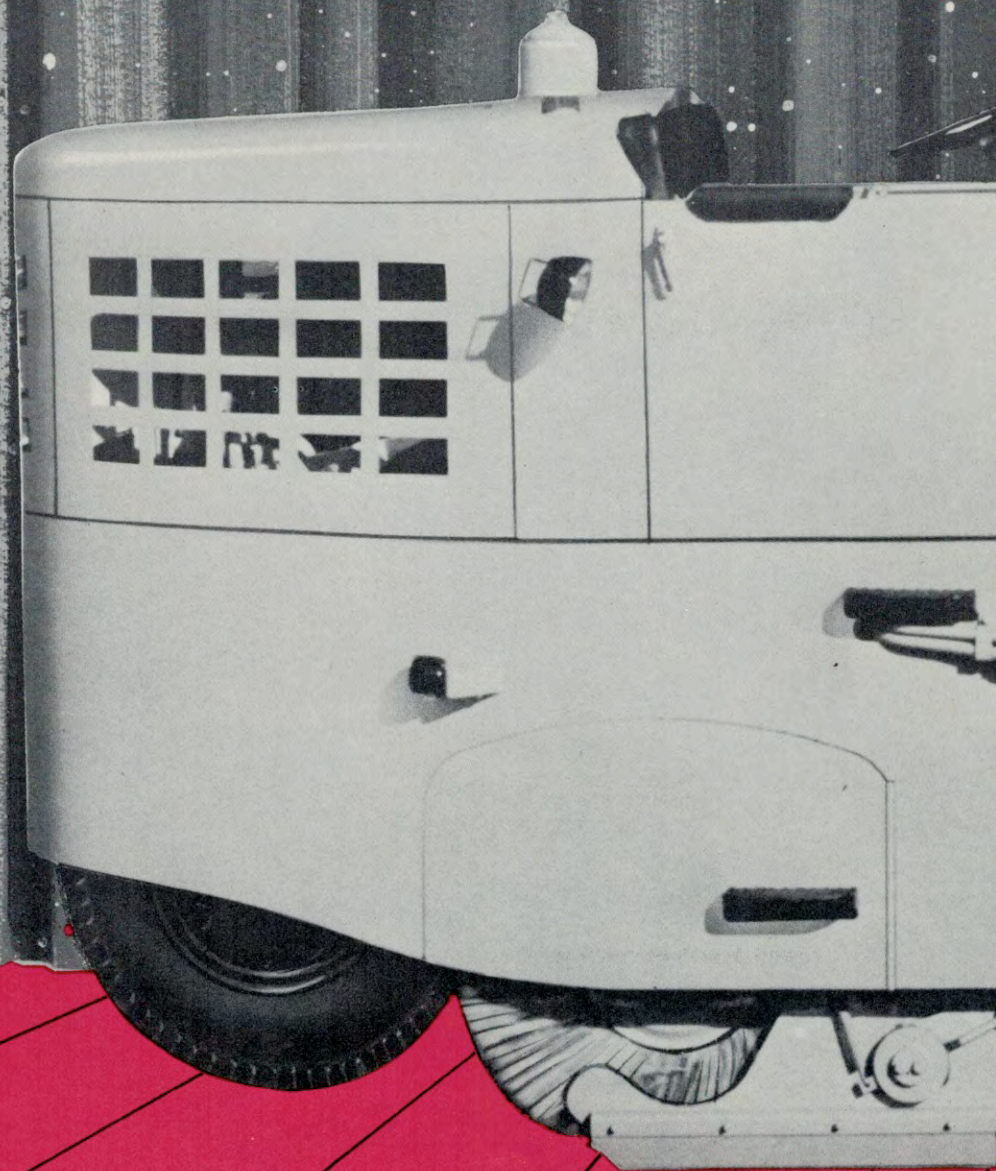
...HOW YOU BENEFIT FROM THIS ELGIN Street King FEATURE

- Hydraulic broom float and independent drive insure the cleanest possible streets.
- Rearward and inward adjustments permit more effective adjustment of the side broom to the pitch of the street.
- The location of the side broom behind the front wheel gives the sweeper better balance and the operator can view his work.
- The flexibility of the side broom protects it from damage—as does the right front wheel and tire.
- Operating parts are sealed in oil tight, dust proof housings to give you a smooth running broom with minimum maintenance and wear.

- Broom bounce is completely eliminated.
- The main broom driving means has no effect on the pressure of the broom on the street.
- The broom wears evenly and will not become cone shaped.
- The broom will not rise up over extra heavy accumulations of dirt and litter.
- You get all the dirt and eliminate the time and expense of a second pass.

...HOW YOU BENEFIT FROM THIS ELGIN Street King FEATURE

the ELGIN Street King[®]

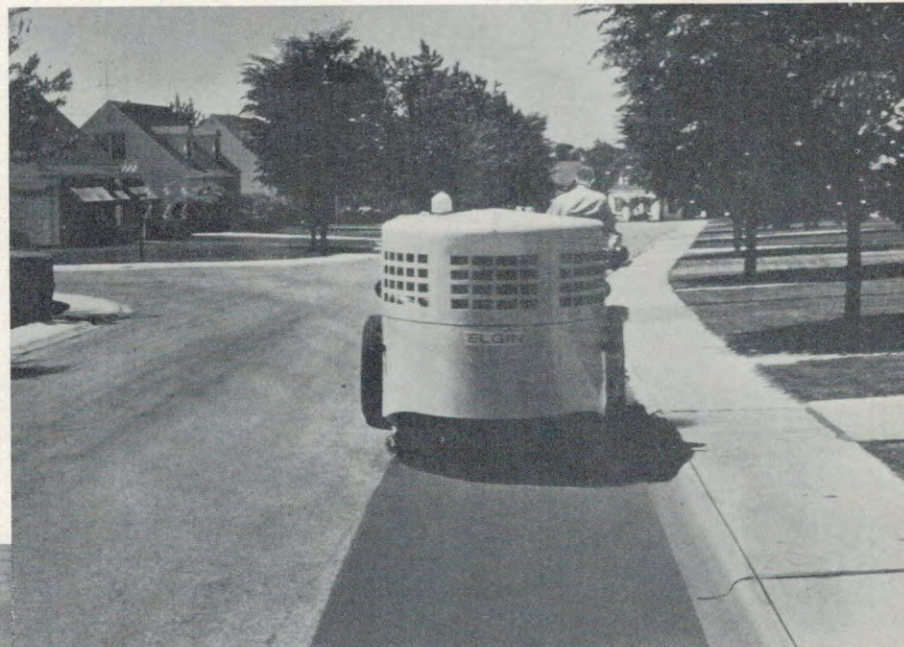


IT PAYS TO BUY THE VERY FINEST IN STREET SWEEPING EQUIPMENT . . .

NOW A 275 GALLON WATER TANK CAPACITY

**MEANS FEWER STOPS
FOR REFILLING AND
MORE PRODUCTIVE
SWEEPING TIME FOR YOU**

The tank capacity of the ELGIN STREET KING is now a huge 275 gallons. Careful planning and the ingenious use of available space has permitted ELGIN engineers to give you the advantage of this tremendous water capacity. It keeps stops for refilling down to a very minimum and is another important ELGIN feature that saves time and speeds up your street cleaning job.

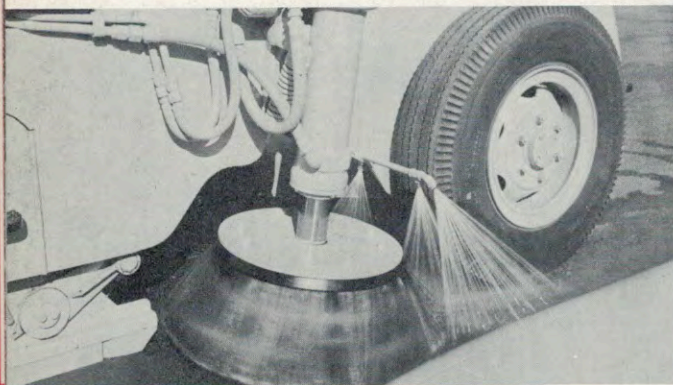


The ELGIN STREET KING features an 8-foot sweeping swath.

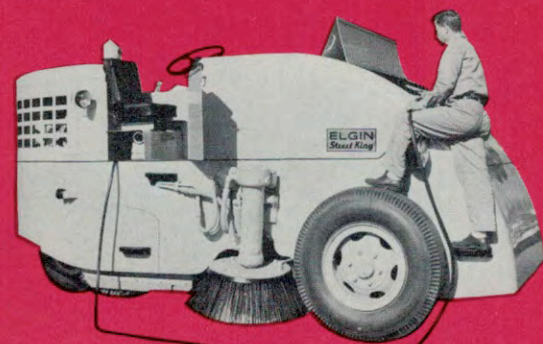
WATER SPRAY SYSTEM CONSERVES WATER, YET GIVES BETTER COVERAGE Because of their strategic location, the ELGIN STREET KING requires only four water spray nozzles. Three are visible in the illustration. One nozzle sprays alongside the curb. Another, angled at 45 degrees, holds down dust just ahead of the gutter broom. The third nozzle, located immediately inside the side plate, sprays the dirt as it is thrown in towards the center of the sweeper by the gutter broom. The remaining nozzle, located under the sweeper, casts a penetrating spray to the left side of the sweeper in the path of the main broom giving complete water coverage across the STREET KING'S 8-foot sweeping swath.

CONVENIENT HOSE STORAGE The ELGIN STREET KING features a handy hose compartment for storing both the filling and wash down hose. The 2½-inch diameter filling hose fits snugly in the compartment, away from weather and wear. The wash down hose, featuring a pistol grip nozzle, is used for wetting the main broom, cleaning the exterior, and washing out the conveyor system and hopper.

A water gauge next to the dash panel in the STREET KING'S cockpit, warns the operator when the tanks need refilling.



Strategic location means that the ELGIN STREET KING requires only four spray nozzles.



The hoses are stored in a special hose compartment. The operator is shown washing down the conveyor system with the wash down hose.

...HOW
YOU BENEFIT
FROM THIS
ELGIN
Street King
FEATURE

- You require fewer stops for refilling and devote more time to actual productive sweeping.
- Spray system provides better dust control.
- Design of system means fewer spray nozzles (4) than any other sweeper and greater conservation of water.
- Water gauge warns your operators when water volume is low.
- The sweeper provides its own water supply for cleaning the unit.

A 4 CUBIC YARD (PLUS) GUARANTEED HOPPER CAPACITY

**BIGGER PAYLOADS ADD EXTRA
MILES OF CLEANLY SWEEP
STREETS TO YOUR
DAILY SCHEDULE**

Four Cubic Yard (Plus) Hopper Capacity
Is an Actual Capacity

No sweeper on the market today can top the STREET KING'S huge hopper capacity. In many communities this large capacity can mean direct disposal to the dump and eliminates the need for pick-up trucks and loading crews. It can actually mean a one man street cleaning department for you.

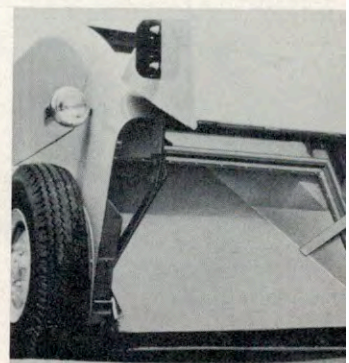
**HUGE LOADS LIKE
THIS MEAN MANY FEWER
STOPS FOR DUMPING PER DAY**



THE
STREET KING
LEAVES A
NEAT COMPACT PILE...

CLEAN, COMPACT DUMPING If you prefer to dump the sweepings directly on the street for rehandling, the STREET KING leaves a neat compact pile. Dumping is controlled from the cockpit. The operator simply moves the hopper control lever to dump the load, backs away, closes the hopper and resumes sweeping.

DOUBLE ACTION DUMPING The STREET KING employs a double-action principle to insure clean, complete dumping. The hopper door raises up first to release the load. When it has reached one-half its upward movement, the floor of the hopper is automatically activated and moves up at a sharp angle to complete the dumping. Rubber scrapers clean the hopper walls and seal it, preventing dirt from seeping back onto the street.

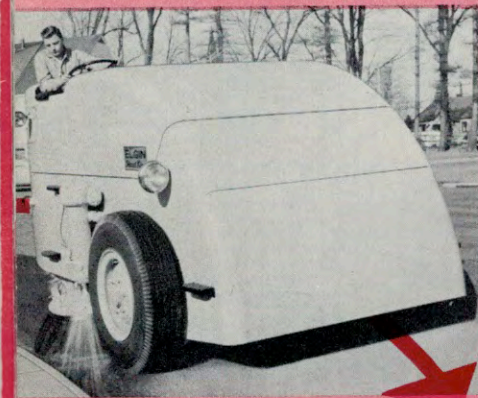
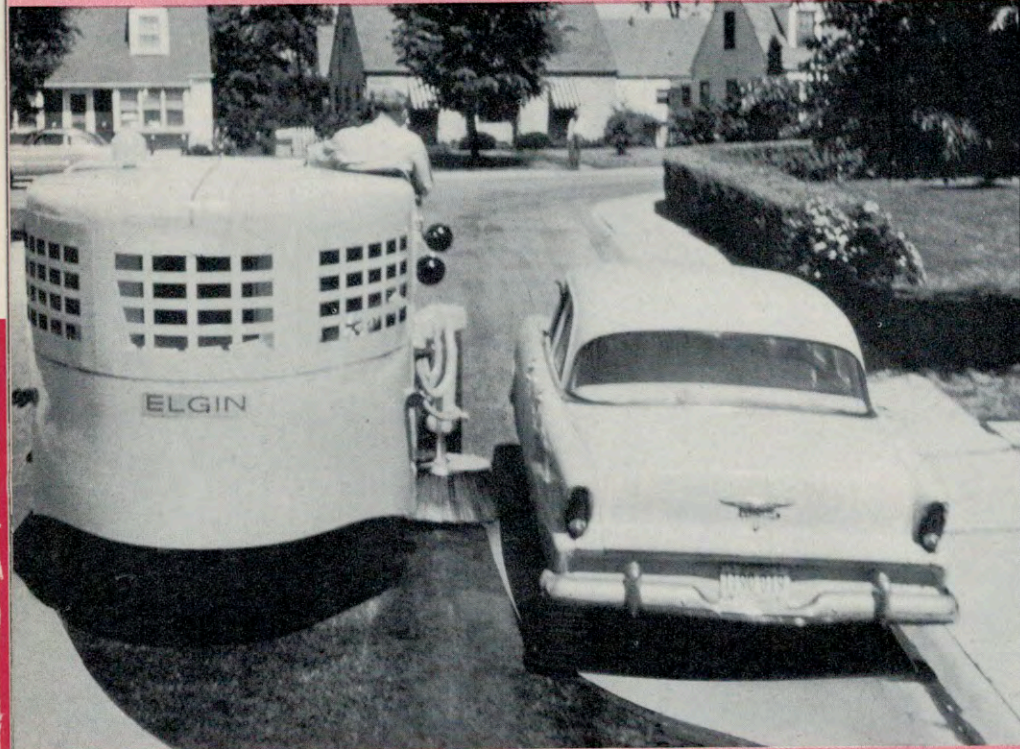


- No other sweeper offers a larger guaranteed hopper capacity—4 cubic yards (plus).
- Large payloads reduce stops for dumping—mean more curb miles swept per day.
- Clean, complete dumping.
- Makes a one man street cleaning department a practical reality for many cities.

...HOW
YOU BENEFIT
FROM THIS
ELGIN
Street King
FEATURE

OUTSTANDING MANEUVERABILITY...

CUTS DOWN UNSWEPT AREA AROUND PARKED CARS



Sharp corners are taken in stride.

The STREET KING provides the most compact design of any large capacity sweeper. The side broom, conveyor and spray system are all within its 129" wheel base. There's no overhang, no counterweighting. The sweeper is balanced for safety.

THE OPERATOR CAN VIEW HIS WORK WITHOUT STRAINING.

Because of the location of the side broom, there are no wheels or appurtenances to block the operator's view. The curved, sloping front of the sweeper body eliminates blind areas and gives the operator unobstructed forward visibility.

NO OTHER SWEEPER IS SO COMPACTLY DESIGNED

FULL VISION...



EASY MANEUVERABILITY PERMITS CLOSE CLEARANCE AROUND PARKED CARS.

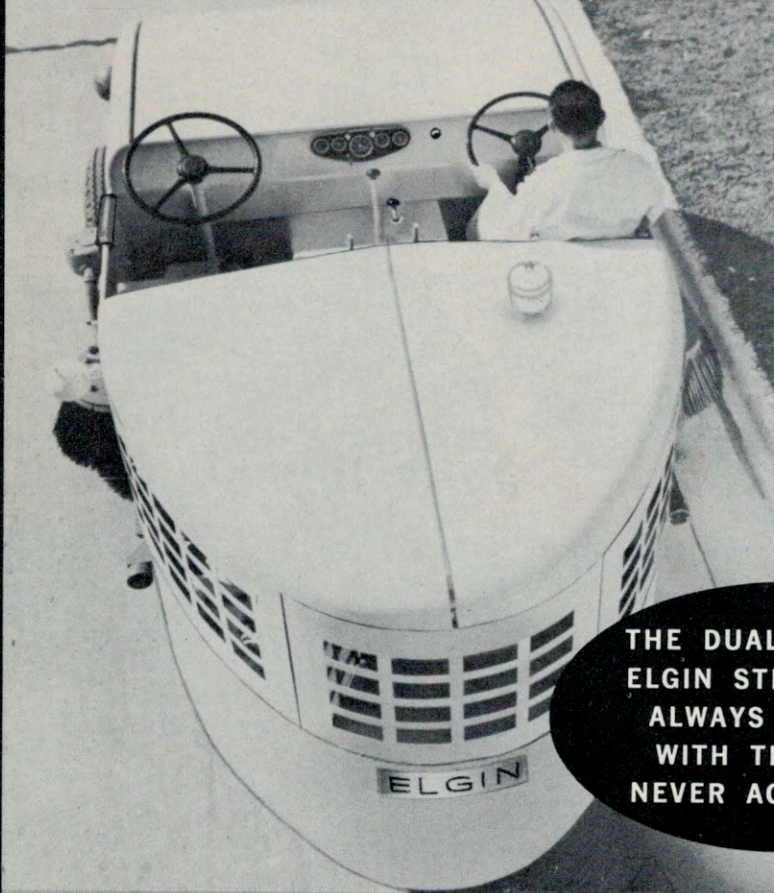
The ELGIN STREET KING'S outstanding maneuverability is a big advantage, particularly in cities where parking regulation for street sweeping are not in effect. The sweeper is easy to steer, features an airplane strut type guide wheel assembly that permits sharp turns and close clearance around cars. The sweeper will take 90 degree corners in stride and has a 30 foot turning circle.

DUAL CONTROLS

FOR FASTER, SAFER CLEANING OF ONE WAY STREETS

For Right Side Sweeping — Right Side Controls

For Left Side Sweeping — Left Side Controls



THE DUAL CONTROL ELGIN STREET KING ALWAYS TRAVELS WITH TRAFFIC—NEVER AGAINST IT.

Here's the answer to sweeping one-way streets, bridges and tunnels—divided highways and boulevards. Equipped with dual gutter brooms and dual controls, your operator always travels with traffic — never against it. You avoid accidents and traffic tie-ups. Sweeping swath is increased to ten feet with two side brooms.

EASY TO REACH CONTROLS All operating controls — engine, transmission, broom, hopper, conveyor, water spray — are within easy reach from both operating positions.



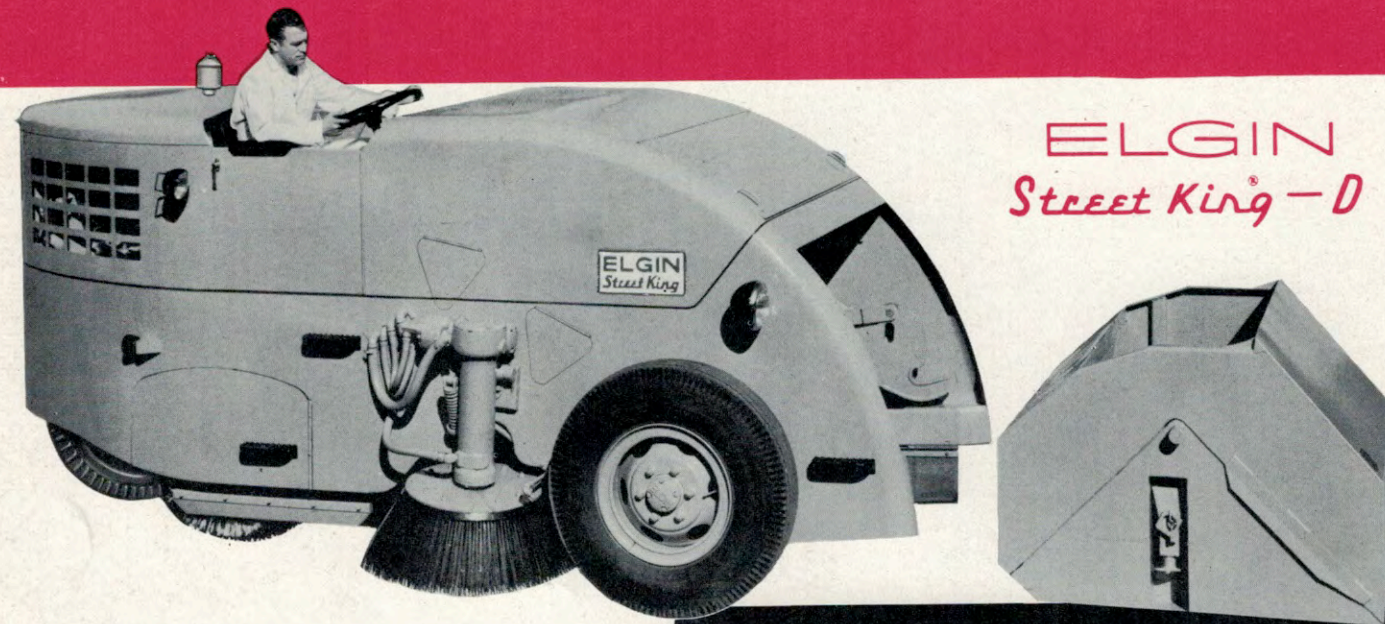
...HOW YOU BENEFIT FROM THIS ELGIN Street King FEATURE

- Airplane, strut type, guide wheel assembly permits sharp turns and close clearance around cars and simplifies changing of rear tire.
- Compact design means better balance for maneuverability and safety.
- Your operator has full visibility.

...HOW YOU BENEFIT FROM THIS ELGIN Street King FEATURE

- The sweeper travels with traffic and you avoid accidents and traffic tie-ups.
- The operator places his attention on sweeping— forgets about on-coming traffic.
- You increase your sweeping swath to ten feet.
- You do a better, faster job of sweeping.

OPTIONAL EQUIPMENT FOR THE

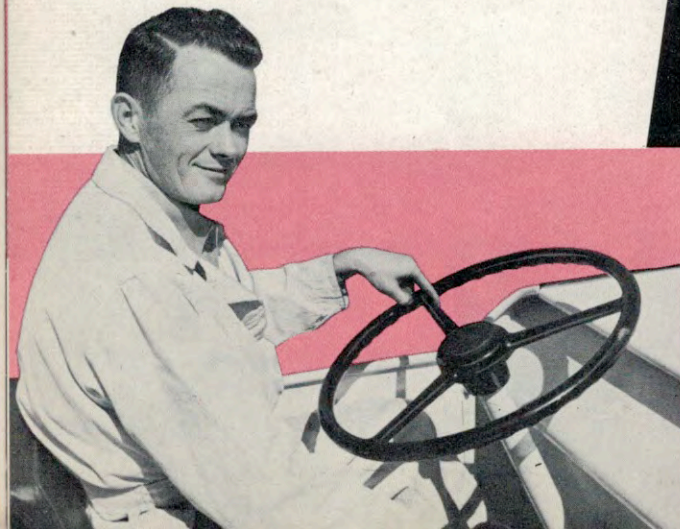


ELGIN
Street King - D

Built with a 3-cubic yard capacity Detachable Hopper, the ELGIN STREET KING-D makes it possible to reduce your cost per curb mile swept by more than 1/2. You eliminate dumping sweepings directly on the street and eliminate manual loading and unnecessary rehandling. The Detachable Hopper is built for use with Dempster-Dumpster hoisting equipment.



FULL WIDTH CAB
Full width, heavy gauge steel cab features shatterproof glass windshield and rear windows. Comes equipped with dual electric windshield wipers and available with either side curtains or full door with roll down windows.



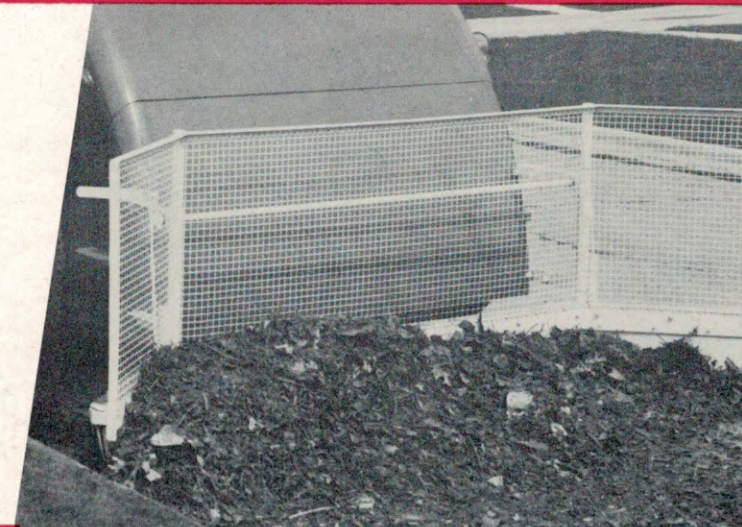
POWER STEERING

The STREET KING'S steering gear responds to the slightest touch when equipped with power steering. It makes driving easier for your operators and adds still further to the sweeper's outstanding maneuverability.

ELGIN *Street King*[®]

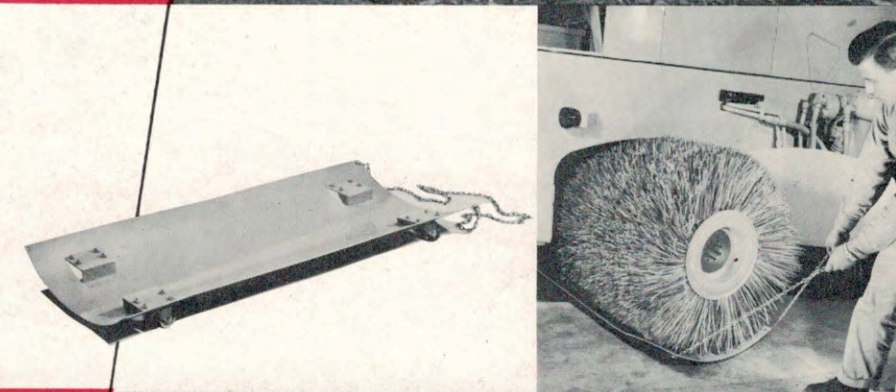
LEAF PILER

The ELGIN Leaf Piler makes leaf collecting easy. Gathers leaves neatly into compact piles for pick-up later.



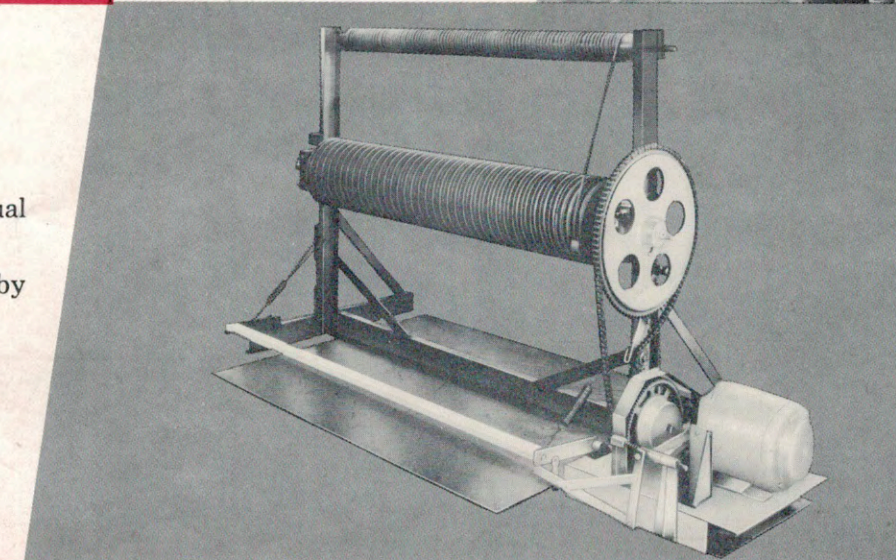
BROOM DOLLY

Speeds broom changing and means less work for maintenance crews. The old broom is simply rolled out and the new broom rolled in.



POWER DRIVEN BROOM RACK

Cuts broom-making time in half over manual methods. Heavy duty, structural channel steel, electrically welded frame. Operated by two horsepower, 1200 R.P.M. 60 cycle, 3-phase, 220/440 volt motor (A.C. or D.C. available).



THE ELGIN STREET KING IS MADE BY

ELGIN SWEEPER COMPANY • ELGIN, ILLINOIS

... FOR OVER 40 YEARS THE LEADER IN ITS INDUSTRY

the
ELGIN
Street King

SOLD
 THROUGH
 THE NATIONAL
 SALES
 ORGANIZATION
 OF



Chicago 4, Illinois

• 231 So. La Salle Street

SPECIFICATIONS

ENGINE

Type Heavy duty, valve-in-head
 Piston Displacement 264.330 cu. in.
 Bore and Stroke 3-11/16" x 4 1/8"
 Number of cylinders 6
 Maximum Brake horsepower 120 at governed speed

TRANSMISSION

Speeds Heavy duty truck type, 5 forward and 1 reverse

FUEL TANK CAPACITY

Capacity 25 Gal.

TIRES

Front 11.00 x 20, 12 ply
 Rear 8.25 x 20, 10 ply

AUXILIARY DRIVES

Main and side brooms, Conveyor and water pump driven by power take-off at front end of engine. Multiple and variable broom speeds depending on R.P.M. of engine.

MAIN BROOM

Size 36" diameter x 68" long
 Control Hydraulic lift
 Core Steel spiral
 Type of suspension Hydraulic, with Knee Action support
 Drive Sprocket and chain in oil

SIDE BROOM

Position Back of Front wheel
 Diameter 36"

Control Hydraulic
 Drive Hydraulic
 Type of suspension Hydraulic
 Number of segments Four
 Angular adjustment Rearward and inward

DIRT CONVEYOR

Conveyor method, Belt-endless fabric reinforced with 11 integrally molded cleats.
 Drive, Reversible hydraulic motor. Automatically centered by Hydraulically operated belt trainer.

DIRT HOPPER

Capacity Actual 4 cu. yds. plus
 Discharge door Front
 Control Hydraulic

WATER SPRAY SYSTEM

Capacity of tank 275 Gals.
 Pump Gear type, belt driven
 Spray nozzles 4 high-pressure type (dual side brooms—7)

DIMENSIONS

Wheelbase 129"
 Length overall 15' 10"
 Width overall 8' 8"
 Height 84" (108" with cab)
 Turning circle 30' 0"
 Sweeping path, 1 side broom 8' 0"
 Sweeping path, 2 side brooms 10' 0"
 Weight (empty) 12,600 lbs.
 Center of main broom to center of side broom 56"
 Wheels and steering 3—Rear steer