

**THE NEW**

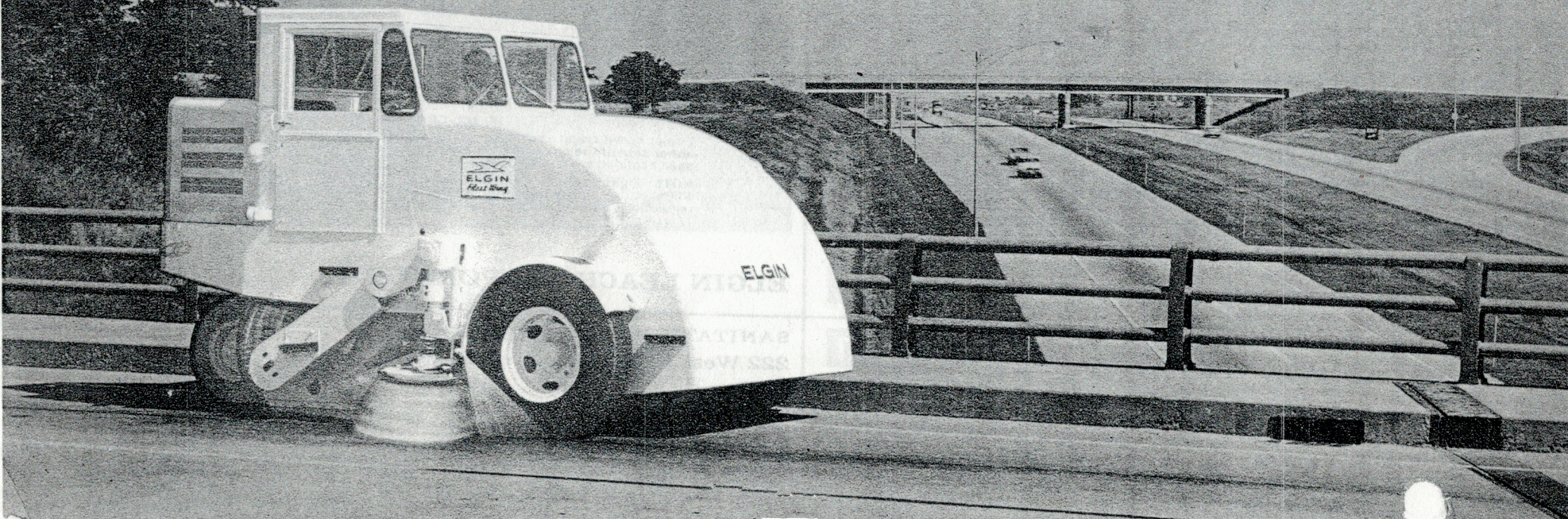
# ELGIN<sup>®</sup> FLEET WING



**SPEEDS UP THE SWEEP UP**

**EXPRESSWAY TRAVEL SPEEDS  
WITH 3 WHEEL MANEUVERABILITY**

**ELGIN** QUALITY LEADER IN THE SWEEPER INDUSTRY





# SPECIFICATIONS: ELGIN® FLEET WING

## DIMENSIONS:

Wheel base	10' 9"
Drive wheel tread	7' 7"
Overall length	15' 10"
Height	8' 6"
Width outside of tires	14'
Turning radius-sweeping	12,000 lbs.
Weight—one side broom with cab/windows	12,600 lbs.
two side brooms with cab/windows	8'
Sweeping path—one side broom	10'
two side brooms	

## ENGINE:

IHC 6 cylinder	BD-264
Piston displacement—cu. in.	264.33
Maximum engine torque—ft. lbs.	248
Maximum brake horsepower	153.5
Air Cleaner—Dry type with replaceable element	
Oil Filter—Full flow with replaceable element	

## HOPPER:

Capacity—Leveled	4 cu. yds.
Operated by two, double-acting hydraulic cylinders	
Positive mechanical lock	

## TIRES:

Front—Heavy-duty truck	(2) 11:00 x 20, 14 P.R.
Rear—Heavy-duty truck	(2) 7:50 x 15, 8 P.R.

## WHEELS:

Front—Steel disc type. Mounted on alloy steel axle attached to 1" steel plate and cross support.	
Rear—Dual steel disc type. Mounted on alloy steel axle and supported by internally reinforced steel strut.	

## WATER SPRAY SYSTEM:

Capacity—Gallons	250
Spray nozzles—located adjacent to brooms	
Strainer and relief valve	
Pump—Gear type—60 psi	
Hopper Conveyor flusher system	
Controls—On-off (variable flow) located in operator's compartment.	

## BRAKES:

Service Brakes—Full power brakes. 317 square inches braking surface area. Protected by double dust shield. Fully enclosed, double cylinder, internal expanding type, operating in both drive wheels.	
Parking Brake—58 square inches braking surface area. External contracting type on main transmission drive shaft. Hand lever operated.	

## CHASSIS-BODY:

Fabricated and welded unitized body using heavy steel plate up to 1 inch thick.  
Hopper inspection door—double-fold panel with lock—27" x 68" opening.

## CLUTCH:

Truck type—11" single plate—hydraulically actuated by foot pedal. Fully enclosed. Replaceable without removing engine.

## CONVEYOR SYSTEM:

Belt—Multiple ply (2 fabric, 3 rubber) calenderized conveyor belt with integrally molded cleats.	
Speeds—Variable—forward and reverse. Independently driven by hydraulic motor.	

## DRIVES:

Main—Truck type differential axle with fully enclosed roller chains to both drive wheels.	
Auxiliaries—Main broom, side broom, and water pump driven by power take-off from main transmission.	
Conveyor—driven hydraulically—protected by relief valve.	

## ELECTRICAL SYSTEM:

Generator—30 ampere	
Battery—12 volt, 70 ampere hour	
Lights—Sealed beam headlights	
Two combination stop and tail lights, adjustable spotlight for each side broom, and lighted instrument panel.	

## FUEL SYSTEM:

Gasoline tank (terne plated)—located outside of operator's compartment. 25 gallon capacity.	
Carburetor—down draft type.	
Fuel pump and filter	

## INSTRUMENTS:

Full-vision, lighted instrument panel with clock-type speedometer and odometer, engine heat indicator, oil pressure gauge, ammeter, fuel gauge, key type ignition switch, choke and hand throttle.

## MAIN (PICK-UP) BROOM:

Type—Duo-coil, spring-suspended and snubbed with positive power hydraulic positioning.	
Size—36 in. diameter, 68 in. long—38 spirals.	
Core—12 in. diameter, steel, refillable and reversible.	
Speeds—Variable.	
Controls—Raised, lowered and positioned hydraulically. Adjustment for pressure and fibre wear from operator's seat.	
Position Indicator—shows position and pressure of main broom—located adjacent to operator's seat.	

## SIDE BROOM:

Type—Vertical digger, hydraulically suspended, with rearward and sideward angular adjustment.	
Size—36 in. diameter.	
Location—Center of sweeper—back of front wheel—near main broom.	
Speeds—Variable.	
Controls—Raised, lowered and positioned hydraulically. Adjustment for pressure and fibre wear from operator's seat.	
Segments—Four, quickly detachable, durable cast iron.	

## SPEEDS:

Up to 35 M.P.H.

## STEERING:

Full power hydraulic—Truck type.

## TRANSMISSION:

Heavy-duty truck type—standard unit in tandem with a 2-speed unit providing 8 forward speeds and 2 reverse.

## STANDARD EQUIPMENT:

Cab with roll-down windows—dual electric windshield wipers	
Power Steering	
Power Brakes	
Fenders—Drive Wheels	
Main broom core—filled with standard 26" fibre.	
Side broom segments—(set of four) filled with 72 lbs. of wire.	
Water tank filling hose—10 feet long, with couplings.	
Hopper and conveyor flushing system	
Painted—White or Highway yellow	

## DUAL CONTROL SWEEPER

Equipped with right and left side brooms, seats and dual controls, providing operation from either side of the operator's compartment for sweeping in the direction of traffic. All other specifications are as listed above.

**NOTE:** Elgin Sweeper Company reserves the right to change the above specifications when, in its opinion, improvements will result from so doing, or when government material regulations make changes necessary.

elgin

leach

## ELGIN LEACH CORPORATION

SANITATION HEADQUARTERS

222 West Adams Street • Chicago 6, Illinois