



THE MODEL 40 MOTOR SWEEPER

Pacemaker in performance, the Model "40" Sweeper is the culmination of 30 years of experience in designing and building motor sweepers. Time-tested values built into thousands of Austin-Western Sweepers, have been combined with new, exclusive features to make the Model "40" the paramount performer on any street, uphill or downhill, rough or smooth.

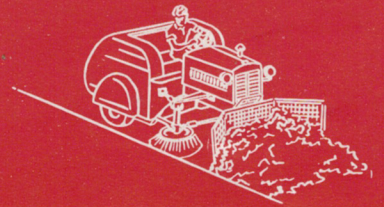
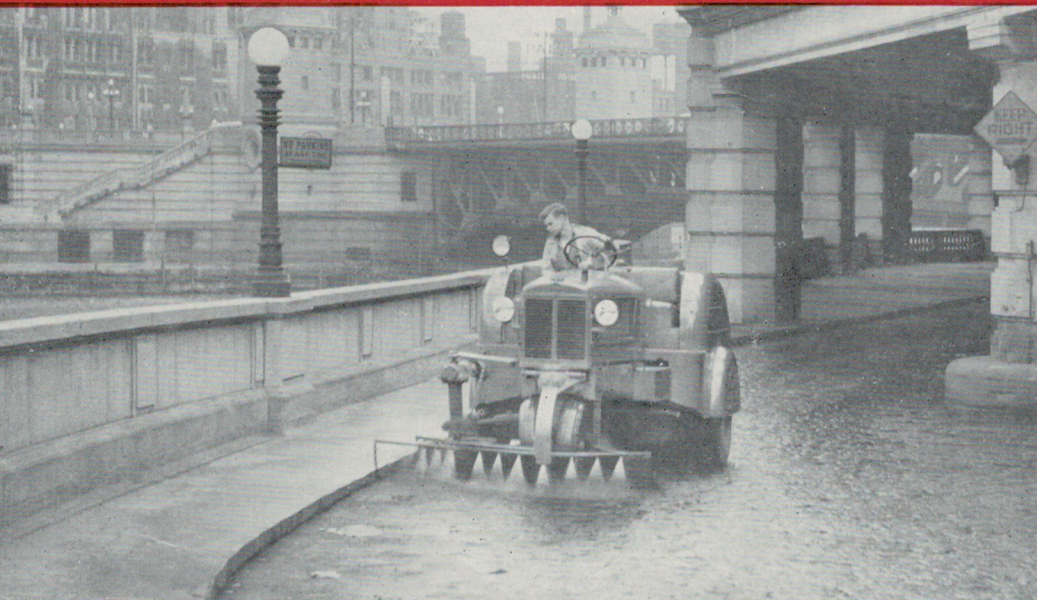
Model "40" sweeping is low-cost sweeping. Every mile of clean-swept street and gutter behind a Model "40" represents substantial sav-

ings in dollars and cents—savings over antiquated hand methods of pan and broom—over less modern types of sweepers with cumbersome and costly elevators and conveyors.

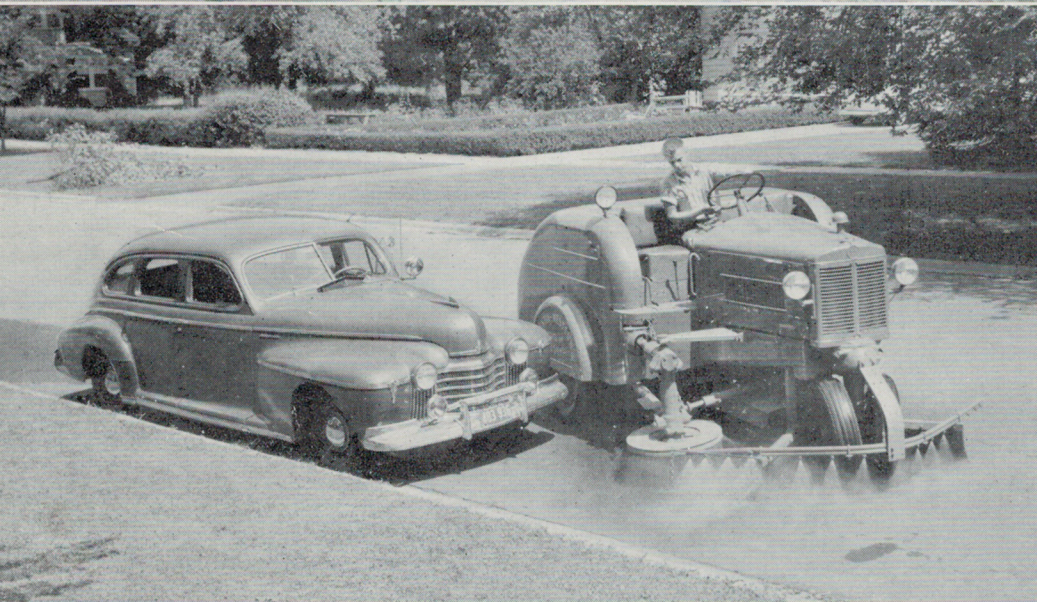
Fast, clean-sweeping, superbly maneuverable, the Model "40" answers the problems of state and municipal cleanliness in parks, streets, alleys, and on highways—industrial cleanliness in factories, warehouses, docks and airports. From end to end it's built to do a cleaner, better job than any sweeper ever manufactured.

AUSTIN-WESTERN

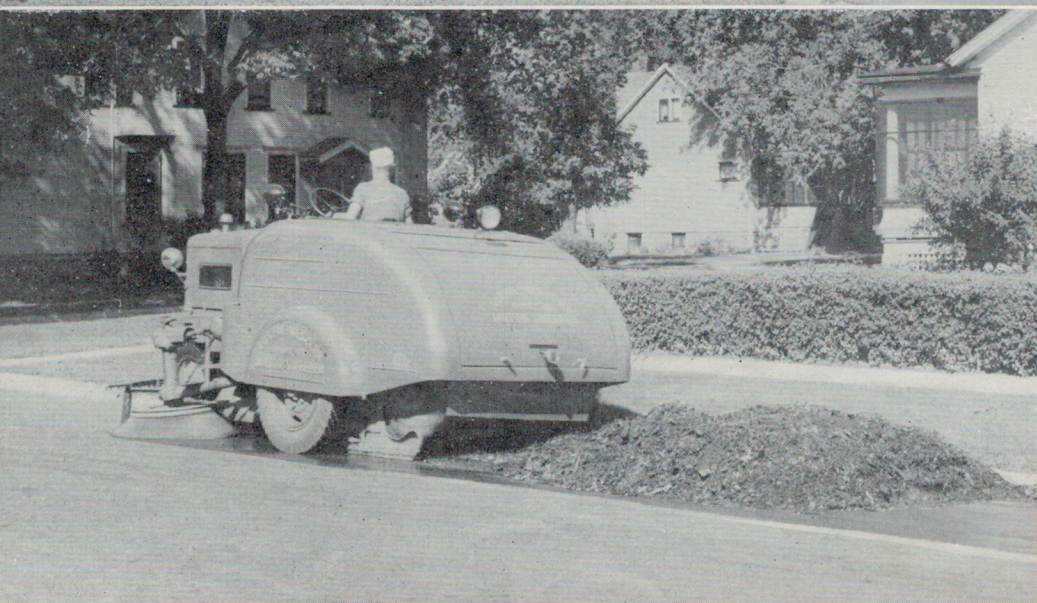
FAST • EFFICIENT • MANEUVERABLE



Street surfaces of any kind — cobblestone, wood block, concrete or asphalt are easily handled by the Model "40". Rough or smooth, in small cities or in large, this sweeper cleans them all. The bump-proof gutter broom follows every curb and contour for top-grade sweeping under all conditions.

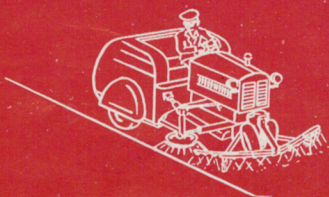


Unrivalled handling ease, and a perfect view of the work from the operator's seat makes the Model "40" the ideal sweeper in close quarters of any kind. When maneuvering around parked cars, the gutter broom hugs both car and curb, leaving a minimum of unswept area.



The load is dumped directly behind the machine through finger-tip hydraulic controls. The Model "40" dumps smoothly, quickly, and easily, while it stays in sweeping lane, ready to resume work without wasting a moment in backing up or in maneuvering around the pile.

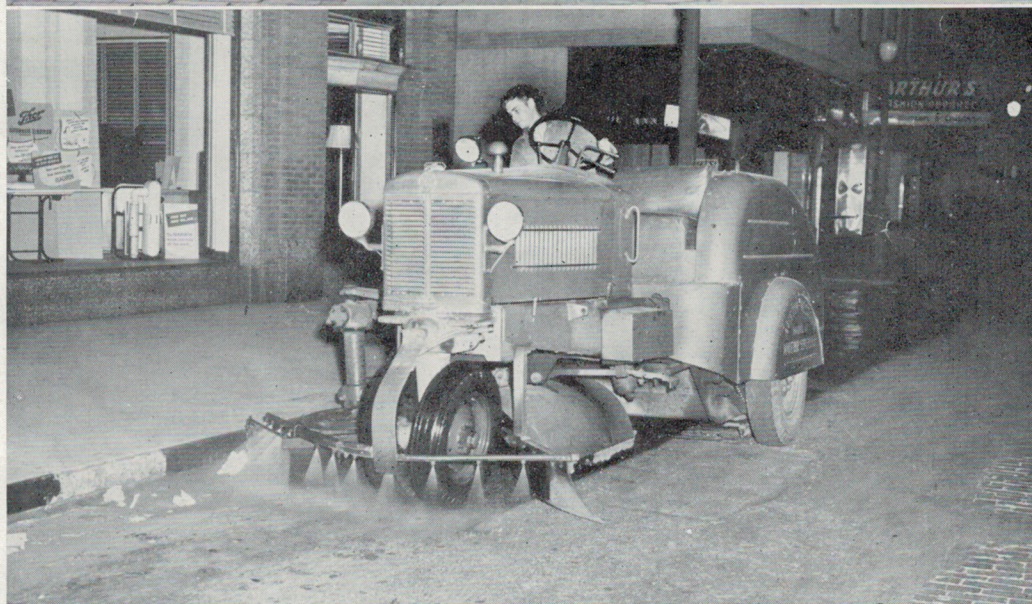
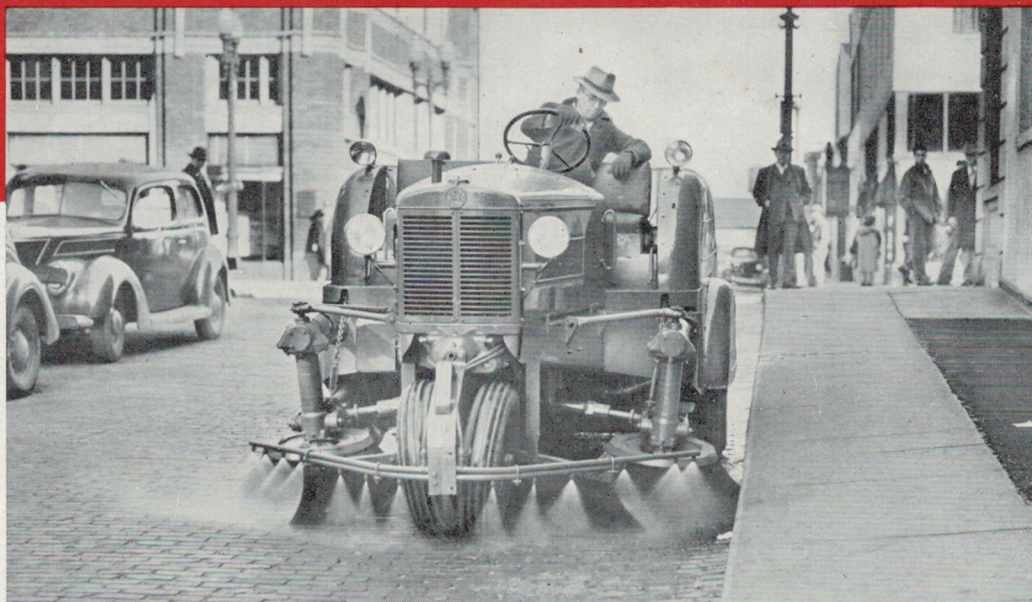
ECONOMICAL

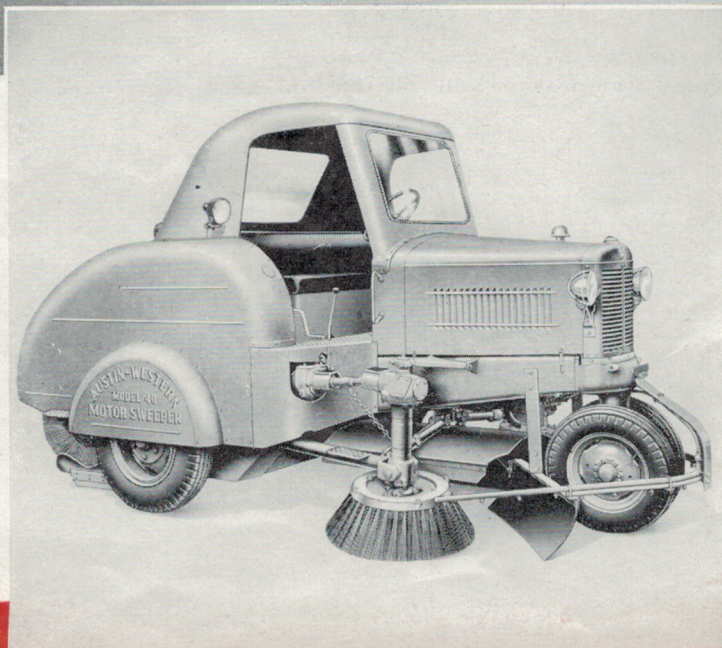
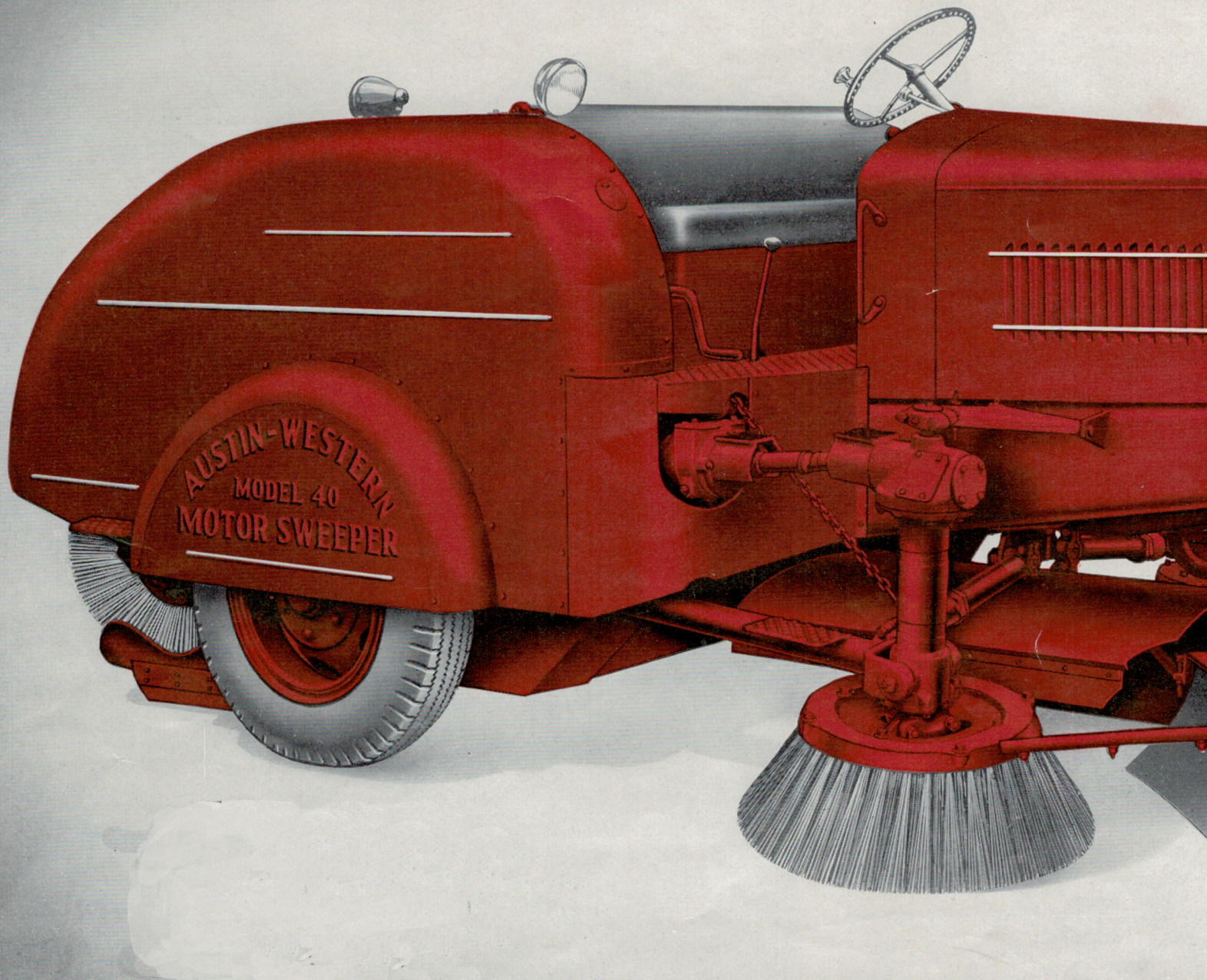


One-way streets present no problem when the Model "40" is equipped with two gutter brooms. The double-broom machine is a great time-saver in sweeping large areas as in airports, parks, and stadiums. Both brooms, the work to be done, and entire street area are clearly visible from the full-width seat.

Business districts, or areas involving heavy parking are generally swept at night. Conveniently located and easily adjustable lights, plus a completely unobstructed view of the work ahead—afforded only by the Model "40"—make it the ideal machine for night sweeping.

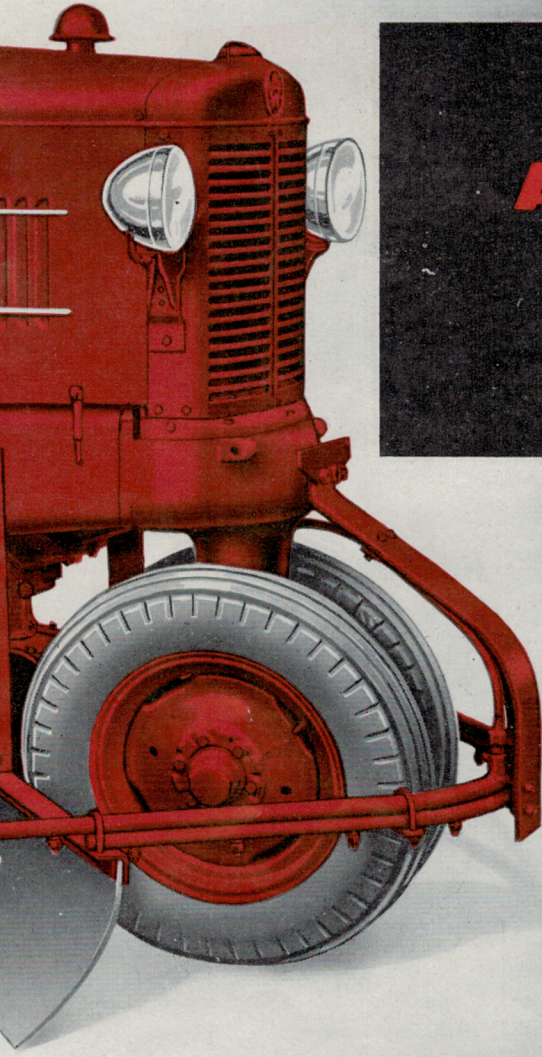
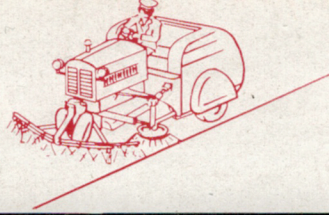
When desired the Model "40" can be furnished with a single left-hand gutter broom. When so equipped the sweeper is identical in action and performance with the conventional machine. This feature is invaluable in any street or alley where traffic moves in the left-hand lane.





The Model "40" can be furnished with streamlined cab and windshield (shown at left) or windshield only. Clear-view doors are available if desired, to provide all-weather protection and comfort for the operator.





THE
AUSTIN-WESTERN
MODEL 40
MOTOR SWEEPER

Latest of the line that's "Built to Out-Perform", the Model "40" Sweeper owes its all-around operating efficiency to its unique features—to the engineering skill and the soundness of construction used throughout the whole machine.

There is no troublesome conveyor in the Model "40" to keep in adjustment and repair. Dirt is thrown directly into the two-yard hopper. A unique and simple arrangement which uses the rear broom as a gate enables the hopper to be closed and the load transported to any location desired. The rear broom is mounted close to the rear wheels. This feature, plus the large, forward-mounted gutter broom enables the Model "40" to sweep closer to parked cars, safety islands, street corners and obstructions than any other Sweeper in the world—and to do a cleaner, better job of sweeping.

The Model "40" can be equipped with either right-hand or left-hand gutter brooms, or both together. Brooms are oscillating, eliminating any danger of damage when bumping the curb or any other obstruction and are provided with a parallel lift arrangement which maintains correct pitch of the brush wire during its entire life.

Driving mechanism is simple, positive and trouble-free. The Model "40" is driven throughout by propeller shafts and gears, with the exception of the chains driving the two rear wheels. A four-speed transmission with all constant-mesh gears adds an extra low speed for sweeping under extremely adverse conditions and at the same time allows a higher speed for transporting the Sweeper.

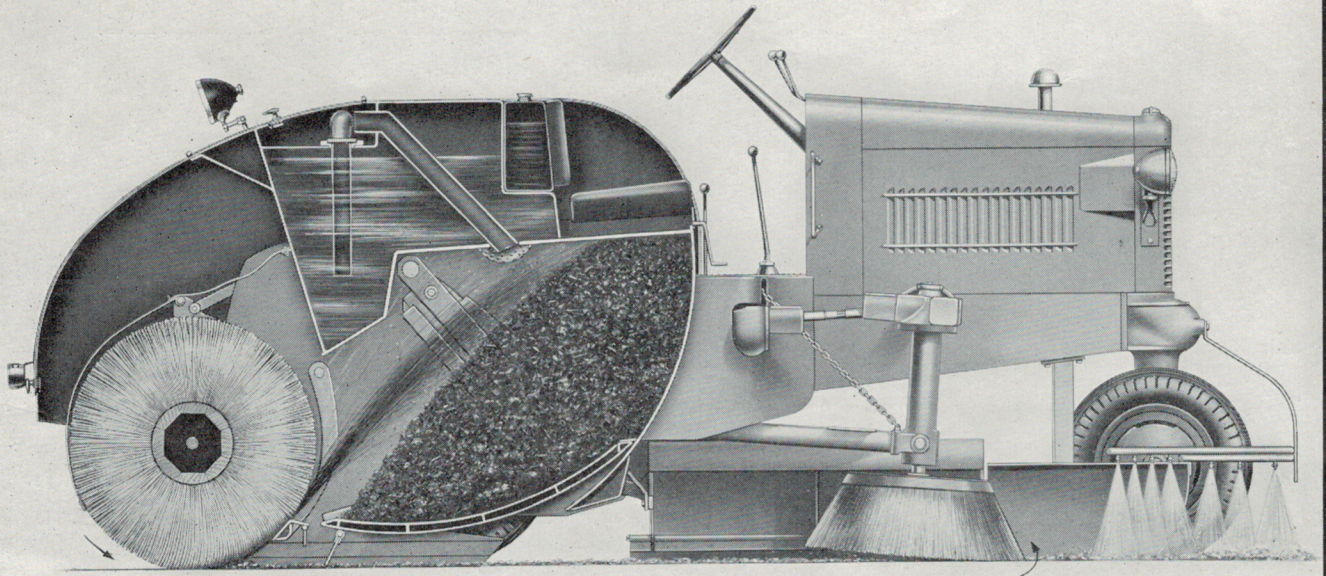
Structural strength of the Model "40" is unequalled. The main frame incorporates the hopper, water tank, transmission and engine supports in one all-welded unit. The best of materials have been used throughout the sweeper with all the skill born of years of research in design and production.

Years of service—efficient, economical, and trouble-free—have been built into this machine. Every Model "40" is a dividend-paying investment in municipal and industrial cleanliness, in health protection, in enhanced property values, and in community progress.



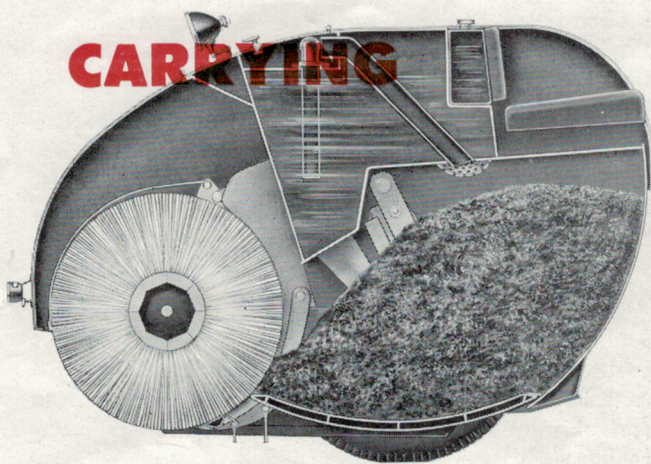
The Leaf Broom attachment handles bulky accumulations of leaves quickly and efficiently while in no way interfering with regular sweeping. Spring suspension mounting allows the broom to follow contour of street.

THE INSIDE STORY OF THE

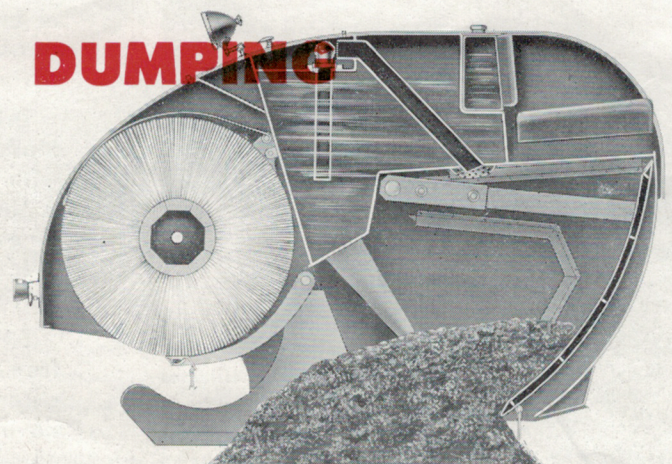


SWEEPING

There is no expensive elevator or conveyor in the Model "40"—no complicated, troublesome mechanism to repair and maintain. The rear broom sweeps dirt and refuse directly into the 2 cubic yard hopper. A built-in flushing device provides a fast, easy method of thoroughly cleaning the hopper.

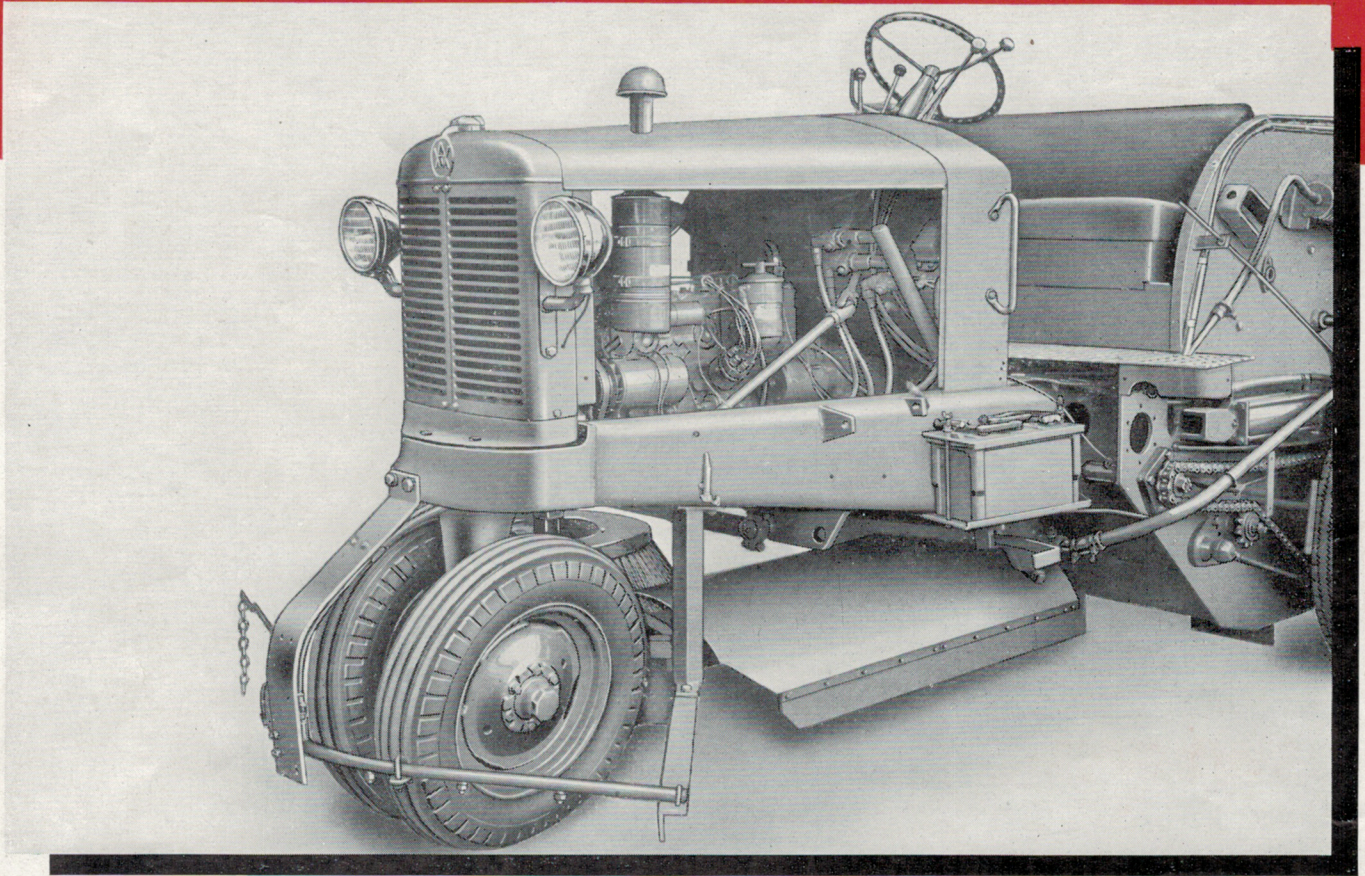


Broom and drag wings lift automatically as hopper gate moves back into rear broom by finger-tip hydraulic control. Rear broom forms leak-proof tail gate, closing hopper for transporting.

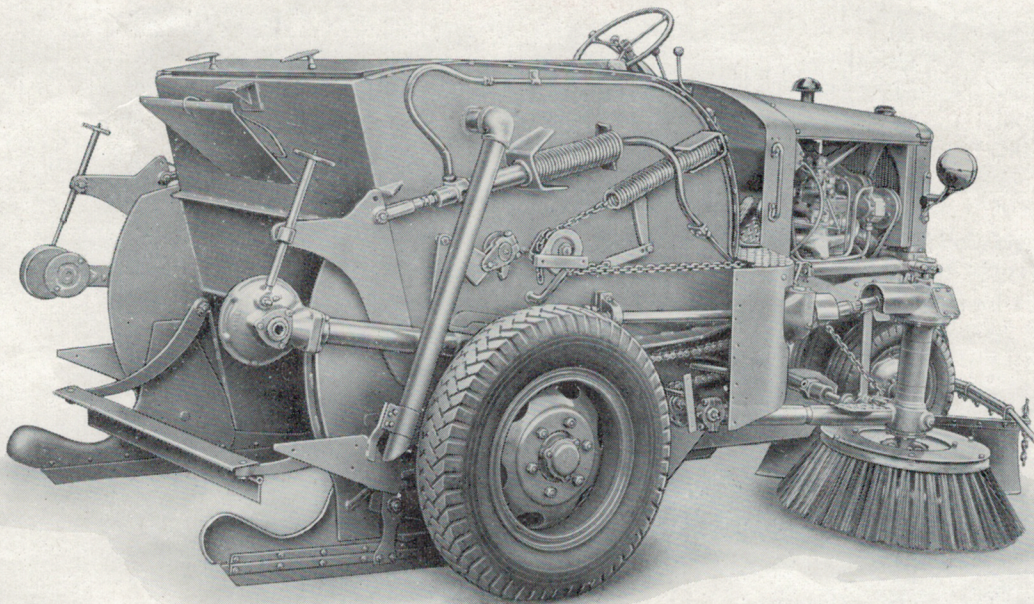


Hydraulically-controlled hopper gate moves up for fast, clean dumping. The Model "40" dumps, and resumes sweeping in less than one minute, *without* backing, or leaving the path of travel.

MODEL 40 MOTOR SWEEPER



Front view of sweeper (above) with hood sides and streamlining removed. Forward location of motor plus the oval-type, shielded drag board keeps motor out of the dust-zone, and free from any accumulation of dirt. The operator of a Model "40" rides and operates a *clean-running* machine.



Rear broom and streamlining have been removed in photo at left to show fully enclosed shaft and gear drive for rear broom, spring tension adjustments for both brooms, deflector bar, and long drag wings.

SPECIFICATIONS

GENERAL SPECIFICATIONS:

Weight, net, with one gutter broom (No fuel, water or operator).....8,750 lbs. approx.
 Weight, shipping, (Includes extra rear broom, gutter broom disc, wire for gutter broom, tools and blocking).....9,300 lbs. approx.
 Wheelbase8'-8" Length overall.....15'-0"
 Width overall (one gutter broom).....7'-9 3/8"
 Sweeping width (one gutter broom).....7'-0"
 (two gutter brooms).....9'-0"

GUTTER BROOM: (R.H. or L.H. or both Right- and Left-Hand)

Type.....One-piece disc Diameter at bottom.....36"
 Material.....Cast iron Control.....Manual
 Broom material.....Steel wire Flexibility.....Oscillates 13°
 How driven.....Prop. shaft and universal joints
 Broom pressure.....Controlled by spring adjustment
 Type of lift.....Parallel

PICKUP BROOM:

Broom material.....Split hickory
 Diameter.....36" Reversible.....Yes
 Length.....60" Control.....Hydraulic lift
 Replaceable.....Yes Drive.....Gear and prop. shaft, (no chains)

ENGINE: (Gasoline)

Make.....International Bore.....3-5/16"
 Model.....GRD-233 Stroke.....4 1/2"
 Number of cylinders.....6 Piston displacement.232.65 cu. in.
 B.H.P. at governed speed.....50 at 1600 R.P.M.
 Fuel tank capacity.....21 1/2 gallons

CLUTCH:

Type.....12" single disc

TRANSMISSION:

Number of speeds forward...4 Number of speeds reverse....1
 Final drive.....Chain to both rear wheels—with differential

TRAVELING SPEEDS:

First3.0 M.P.H. Fourth17.3 M.P.H.
 Second4.4 M.P.H. Reverse2.6 M.P.H.
 Third6.3 M.P.H.

SPRAY SYSTEM:

Capacity of tank.....190 gallons
 Piping.....Twin spray pipes with brass nozzles
 Spray nozzles....Both large and small nozzles mounted forward across sweeping path.
 Control....Dual (valve) controls to regulate amount of water supplied. Located near steering wheel.

WATER PUMP:

Type.....Gear
 How driven....May be disengaged when operating without water. Direct drive.
 Capacity.....25 gallons per minute

RELIEF VALVE:

Pressure setting.....35 lbs. per sq. in.

HOPPER:

Capacity.....2 cu. yd.
 Construction.....All welded including water tank
 Controls....Separate hydraulic control for moving hopper floor to any one of 3 positions: sweeping, carrying, or dumping.
 Hopper floor....Clamshell type, all welded, one-piece, pivoted to hopper sides.

WHEELS AND TIRES:

WHEELS:	Front	Rear
Number	2	2
Type	Disc	Disc
Material	Steel	Steel
TIRES:		
Type	Heavy-duty	Heavy-duty Truck
Size	6.00 x 16	7.50 x 20
Ply rating	6	10

(Puncture proof tubes can be furnished on special order.)

BRAKES:

Service:
 Type.....Internal expanding, hydraulic, foot operated
 Where applied.....Both rear wheels
 Emergency:
 Type.....Internal expanding, mechanical, hand operated
 Where applied.....Rear wheel

ELECTRICAL EQUIPMENT

Starter	2 Headlights	
Generator	1 Tail light	} Combination unit
Battery, 21 plates, 6 volt, 168 ampere hours at 20 hour rate	1 Stop light	
	1 Gutter broom flood light	
	1 Rear flood light	

INSTRUMENT PANEL INCLUDES:

Dash light	Electric starter button
Speedometer	Horn button
Ammeter	Ignition switch
Oil pressure gauge	Light switches

EXTRAS FURNISHED WITH EACH SWEEPER:

1 Extra complete rear broom filled with fibre
 1 Extra gutter broom disc
 Extra wire to fill one gutter broom disc
 1 Filling hose with couplings

SPECIAL EQUIPMENT:

LEAF BROOM:
 Weight complete210 lbs.
 Height complete33"
 Sweeping width9'-0"
 Upper section.....1" mesh wire screen, reinforced by angles
 Lower section11" long gutter broom wire brushes, bolted on in three sections.
 Clearance above pavement when raised.....3"
 Method of raising.....Hand operated, self-locking lever, close to operator. Adjustable lifting spring.

ShapeConcave, to gather piles

BROOM FILLING MACHINE:

For refilling rear broom

CAB:

Open type with glass windshield. Can also be had with doors.

Specifications Subject to Change Without Notice

AUSTIN-WESTERN COMPANY

Distributors in Principal Cities

AURORA, ILLINOIS

Cable Address AWCO, Aurora

SOLD AND SERVICED BY
R. W. BLEILER EQUIP. CO., INC.
Exclusive Distributors
 579 NEW PARK AVENUE
 WEST HARTFORD, CONN.
 3-4293 Telephones 3-4294